

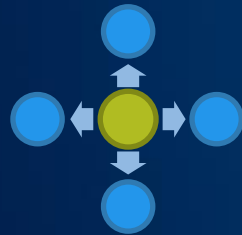
alden.[®]

software • services • smarts

Who is Alden?



Better Communities
through Better Infrastructure



Enterprise Asset Management for
Power and Communication providers



Software, Services and Smarts

About Alden

22 years in business

Offices: Birmingham and Denver

In-house Development staff (21)

Multiple enterprise systems

IOU & Tier 1 CSP loyal customers

Core Values

Innovative

Pursues Excellence

Integrity

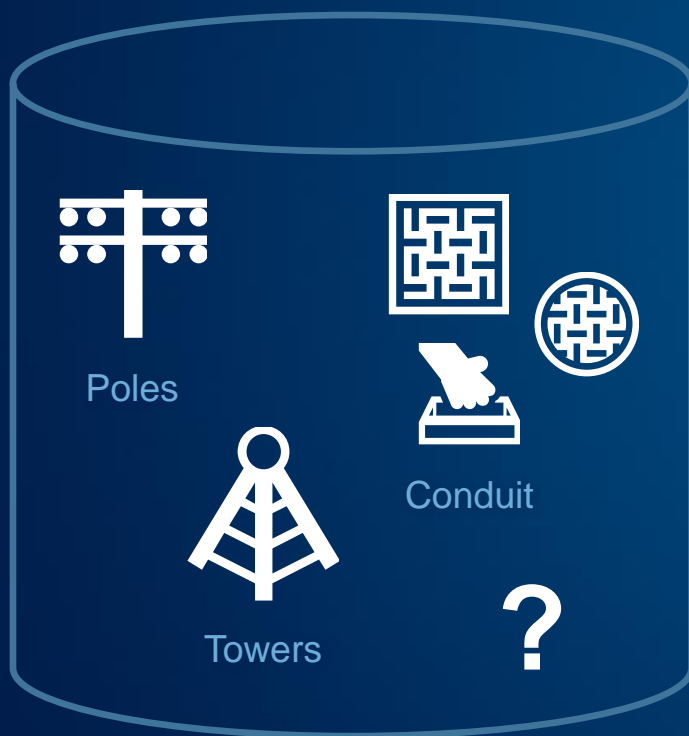
Can-do Attitude

Driven to Learn & Grow

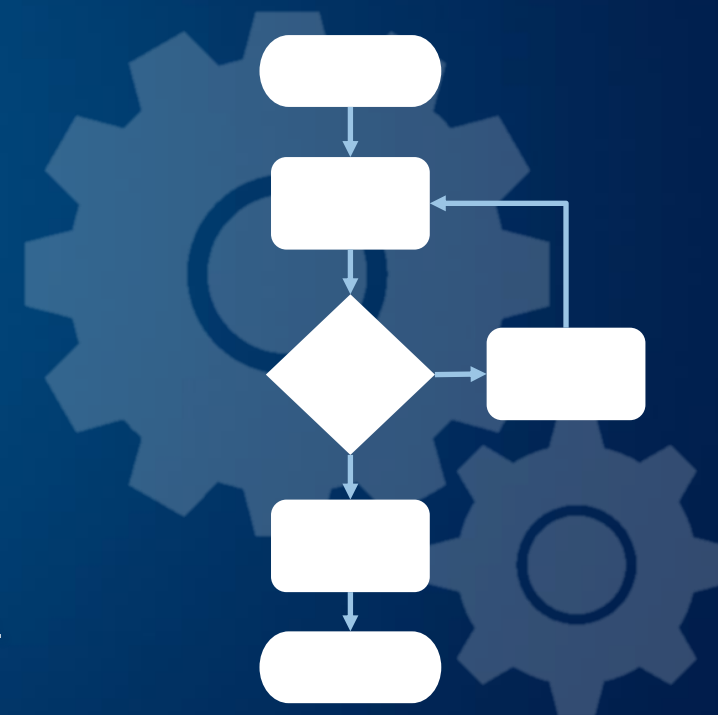
Accountable

Respect

A multi-company database of assets



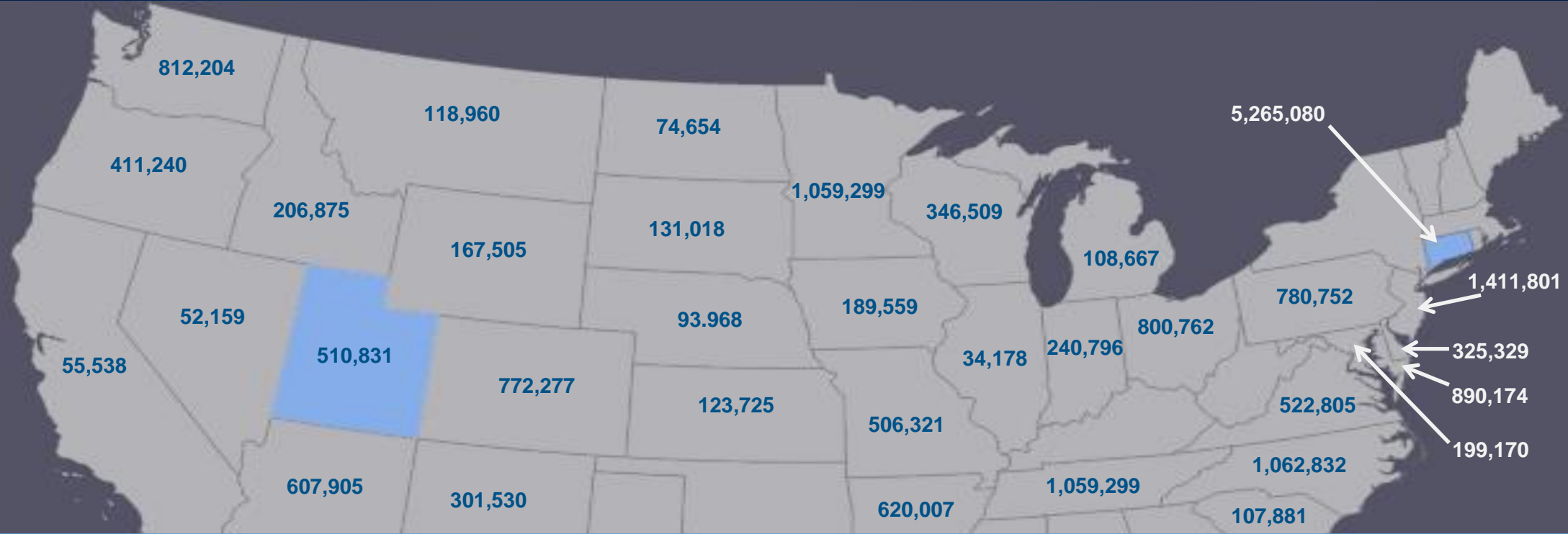
a structured workflow engine



Sharing assets and workflows
allows coordination between companies.

Private assets and workflows allow
seamless integration within companies.





System of choice for Utah and the mandated system in Connecticut



notify is the only application that operates as a Central Pole Database

Public Utility Regulatory Agency (PURA) in Connecticut



Two-way communication of pole data for multiple utilities in CT



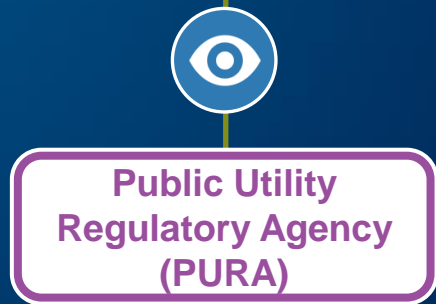
Data sharing allows coordination between utilities. Private assets and workflows provide seamless integration within the utilities



No data access



Attaching partners can view data and take actions as permitted by owner



Regulatory agencies can view data as needed



pole asset data



view data



take action



cannot view or take action



Height

- 35 (1688)
- 40 (1323)
- 30 (165)
- 45 (161)
- [see more](#)

- Class**
- Unk (1179)
 - 4 (974)
 - 3 (430)
 - 2 (425)
 - [see more](#)

- Material**
- NONE (3394)

- Attachers**
- CHARTER COMMUNICATIONS (3394)
 - CONNECTICUT LIGHT&POWER (3389)
 - FRONTIER (AT&T - CT) (3235)
 - UNKNOWN (8)
 - [see more](#)

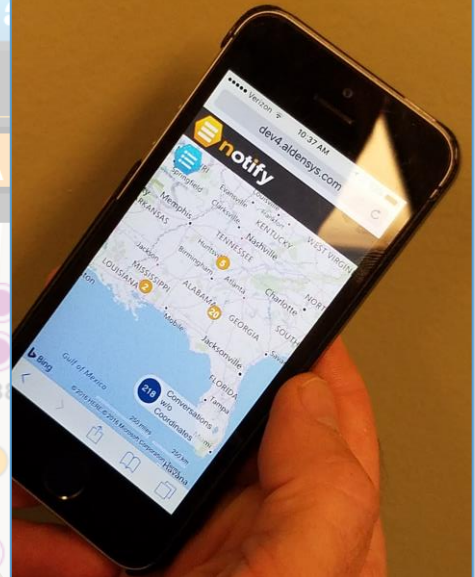
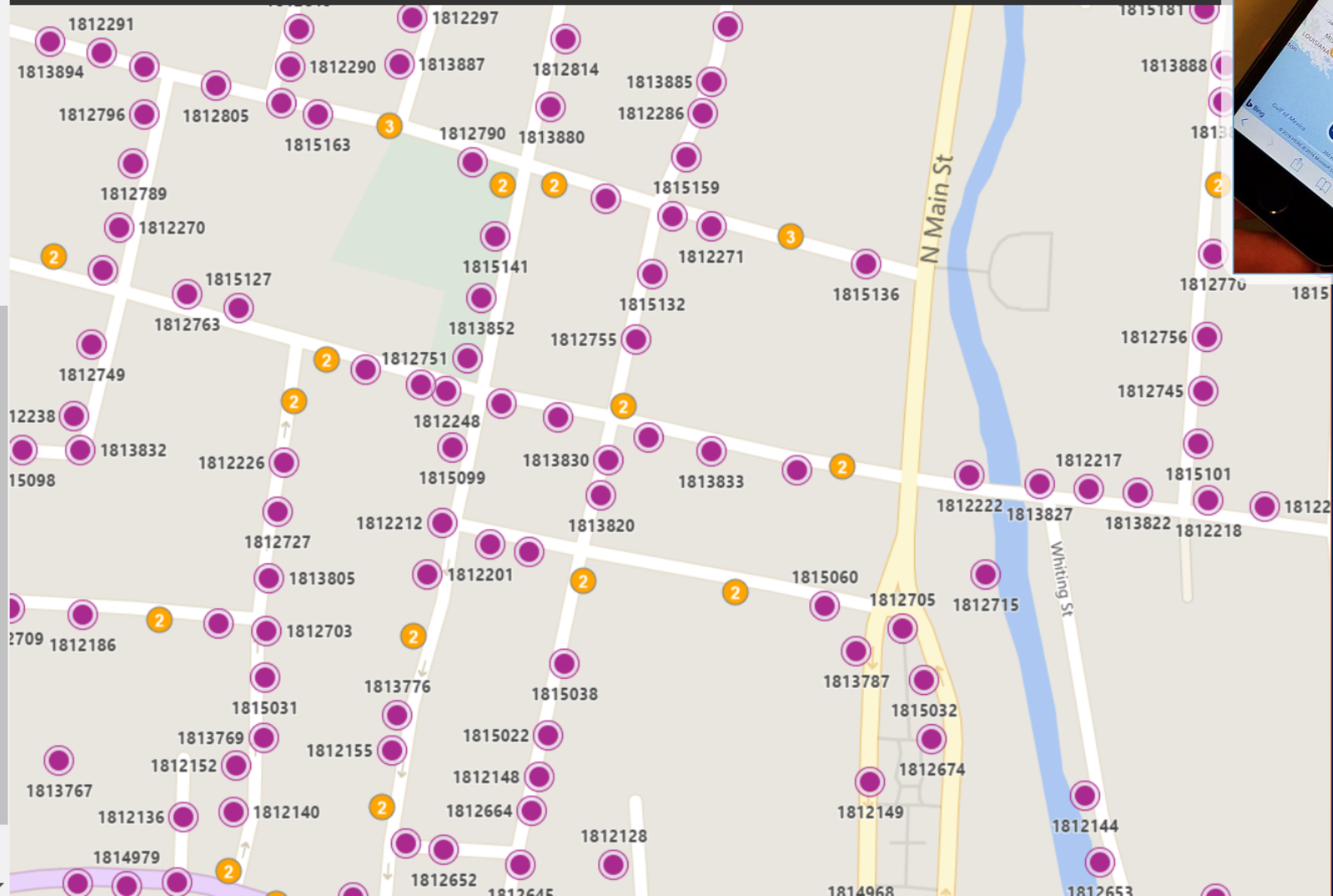
- Town**
- Winchester (4562)
 - [see less categories](#)

clear all filters

- initiated by me 664
- my conversations 1019

Group Results By

No Grouping Show Shared Data:



work order

initiated by

created on

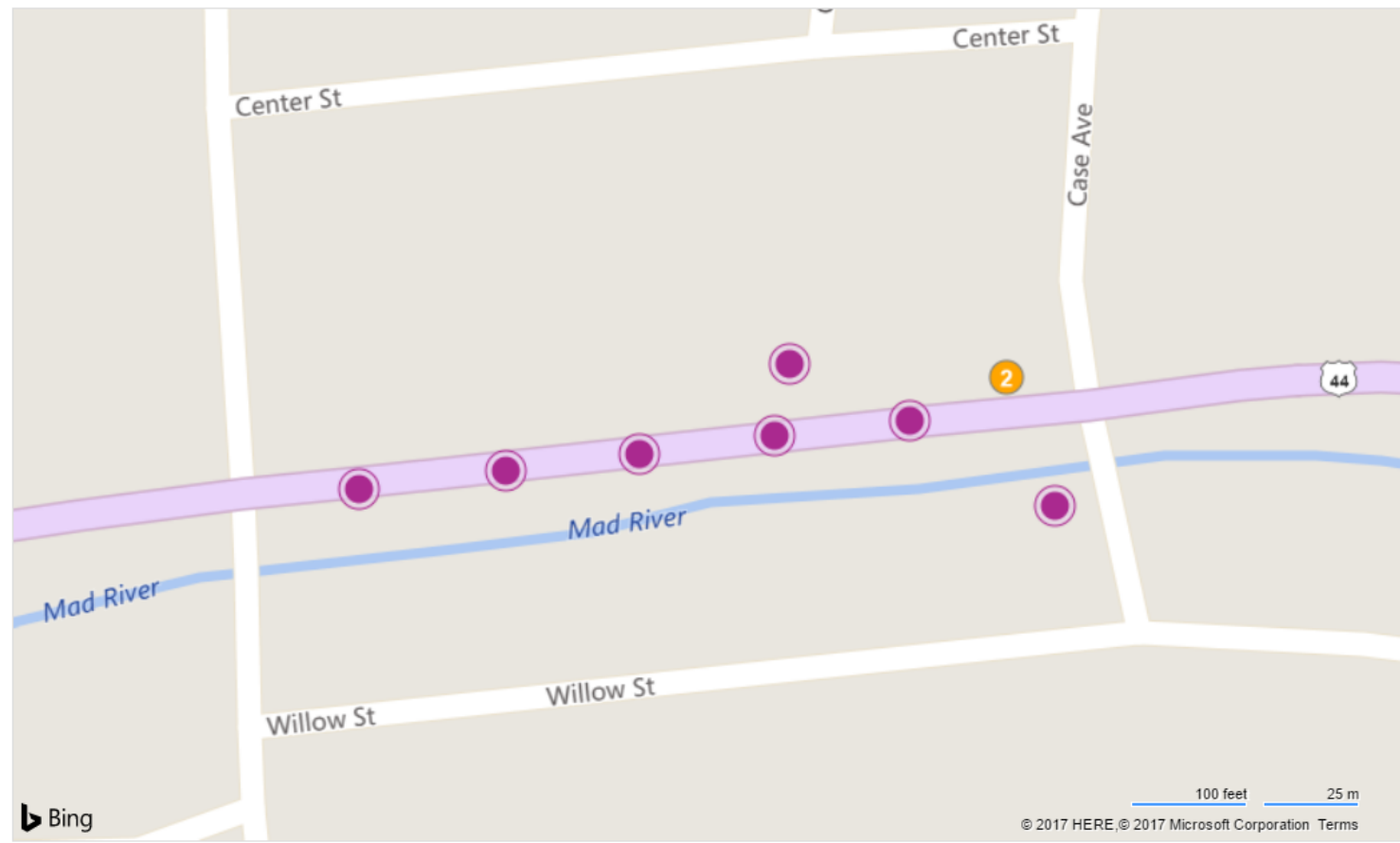
status expires on

title

description

state

location

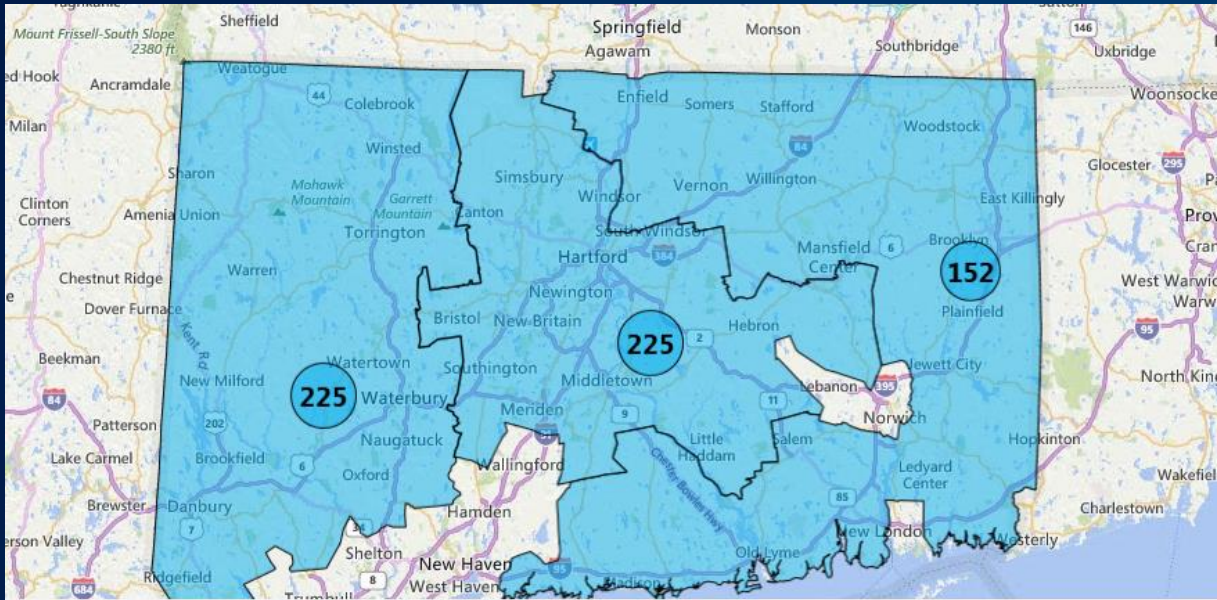


PURA Reports

- ✓ Provide data on WHAT activities
- ✓ Who is currently responsible?
- ✓ How long each step has taken?
- ✓ Due dates

- Reports for:
- Existing (backlog) Double Wood
 - Business-as-Usual Transfers
 - Permit to Attach Requests

Conversation	Status	Who	# days in status	Due date	Total # days of conversation	...
111222	Transfer Overdue	A1 Comm.	46	3/31/2017	89	
123456	Pull Pole Complete	ABC Power	12	3/31/2017	76	
133455	Transfer in Progress	CC CATV	8	4/15/2017	27	



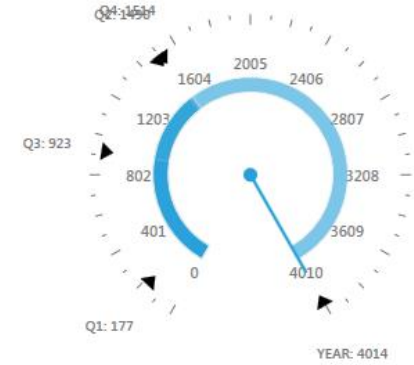
APPLICATION COUNT

602

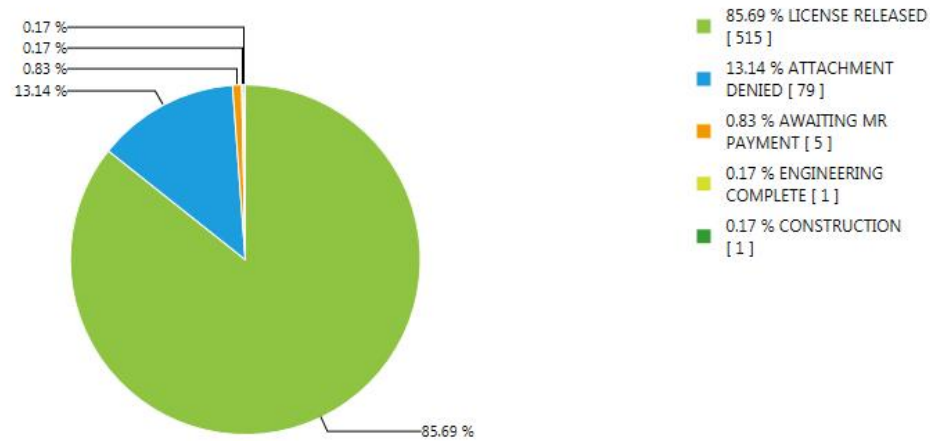


POLE COUNT

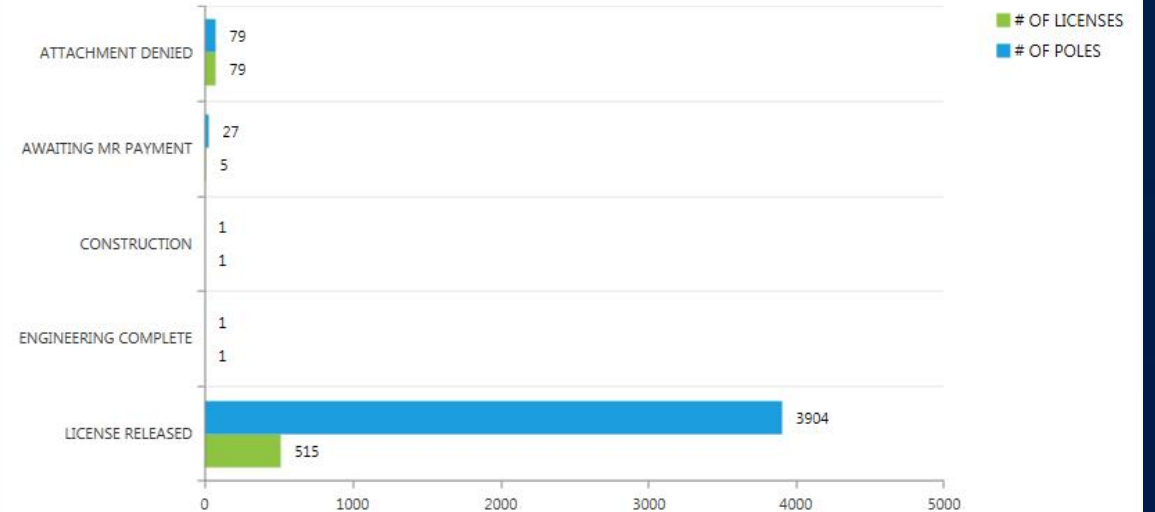
4014



LICENSE APPLICATIONS STATUS (%)



LICENSE APPLICATIONS STATUS

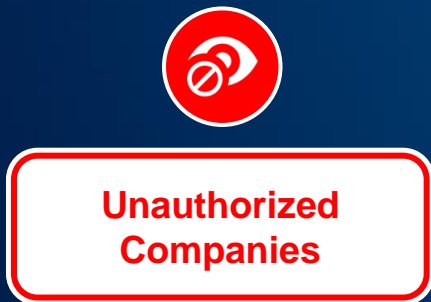




Two-way communication of pole data for multiple utilities in CT



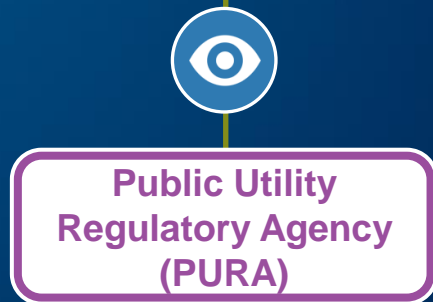
Data sharing allows coordination between utilities. Private assets and workflows provide seamless integration within the utilities



No data access



Attaching partners can view data and take actions as permitted by owner



Regulatory agencies can view data as needed



pole asset data



view data



take action



cannot view or take action

Implementation Timeline for California

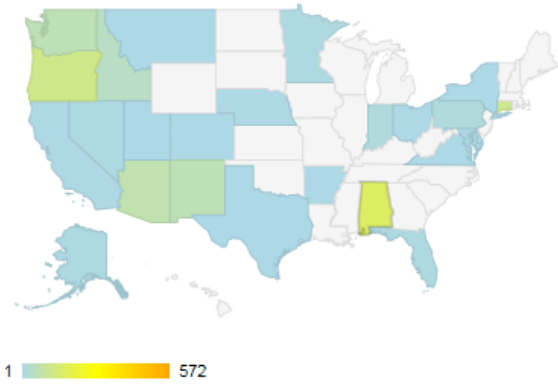


More Reporting Examples

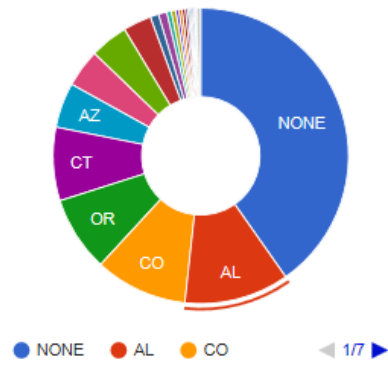
All Assigned To Me Initiated By me

Reset All Filters

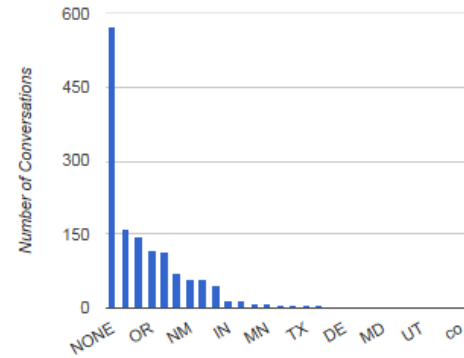
All My Conversation By State



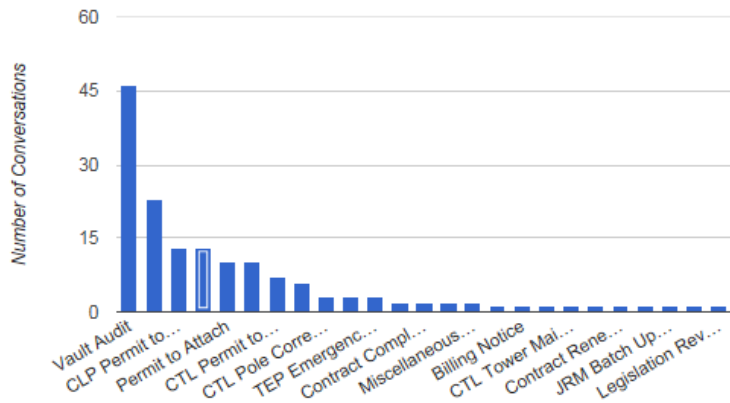
All My Conversation By State



All My Conversation By State

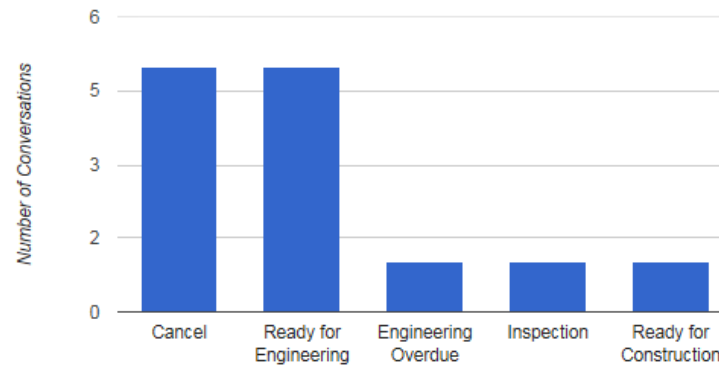


Conversation Types For All My Conversations In AL



Conversations Assigned To For Current Filters

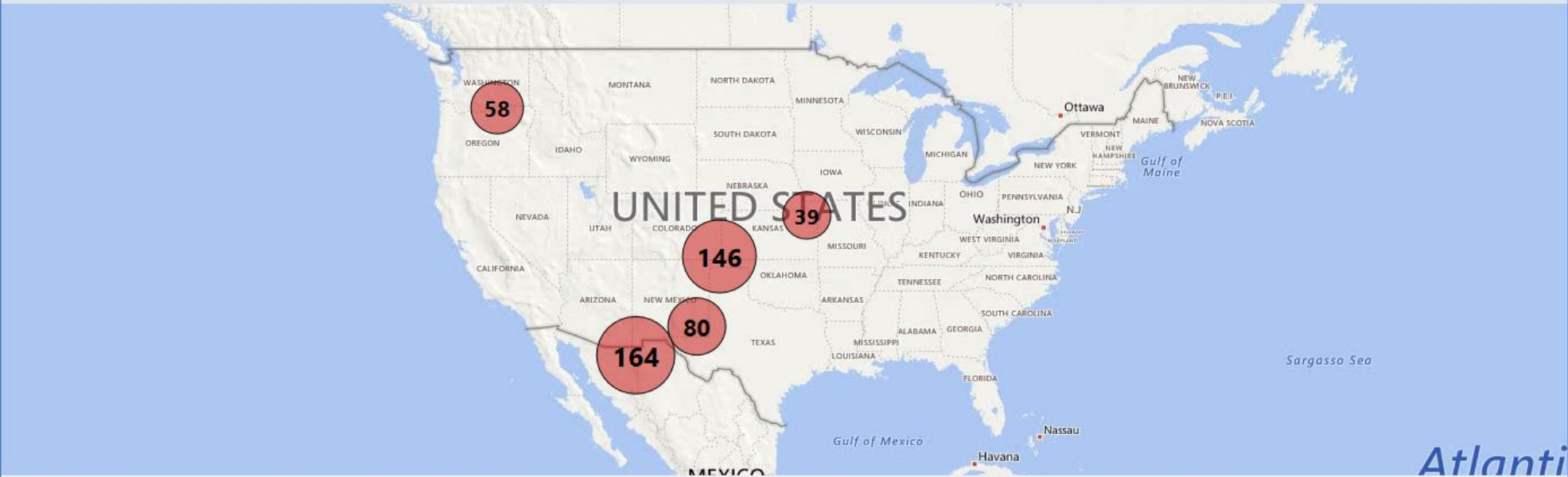
TPA Construction status breakdown



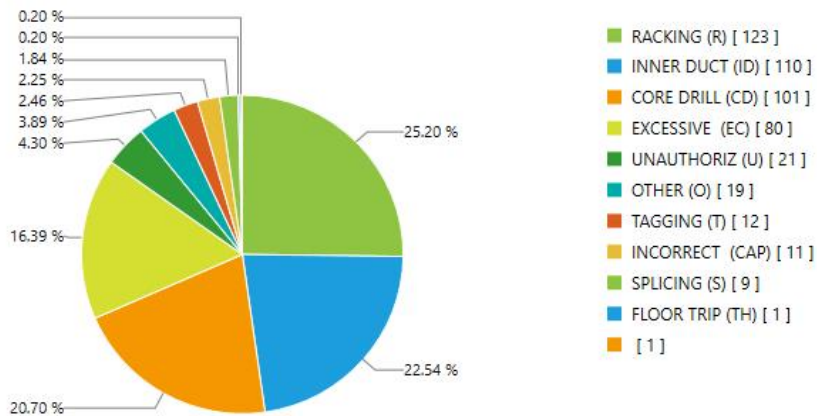
Conversations Initiated By For Current Filters



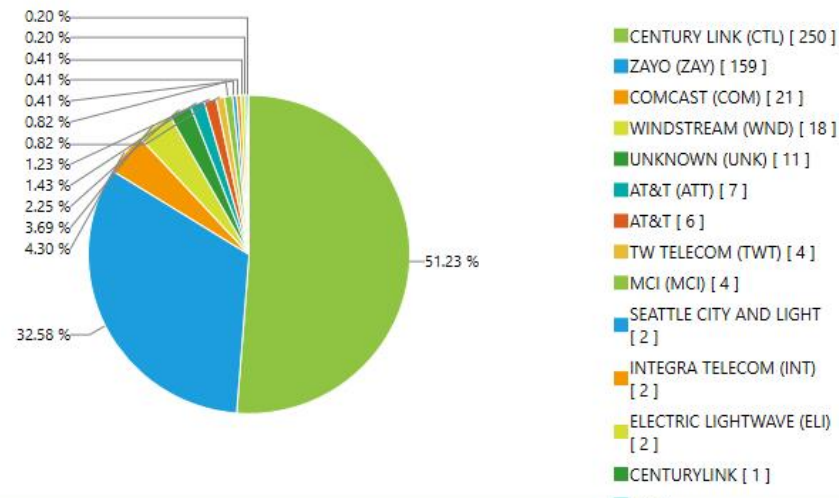
Vault Violation View

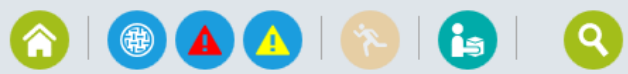


VIOLATIONS BY TYPE FOR ALL STATES

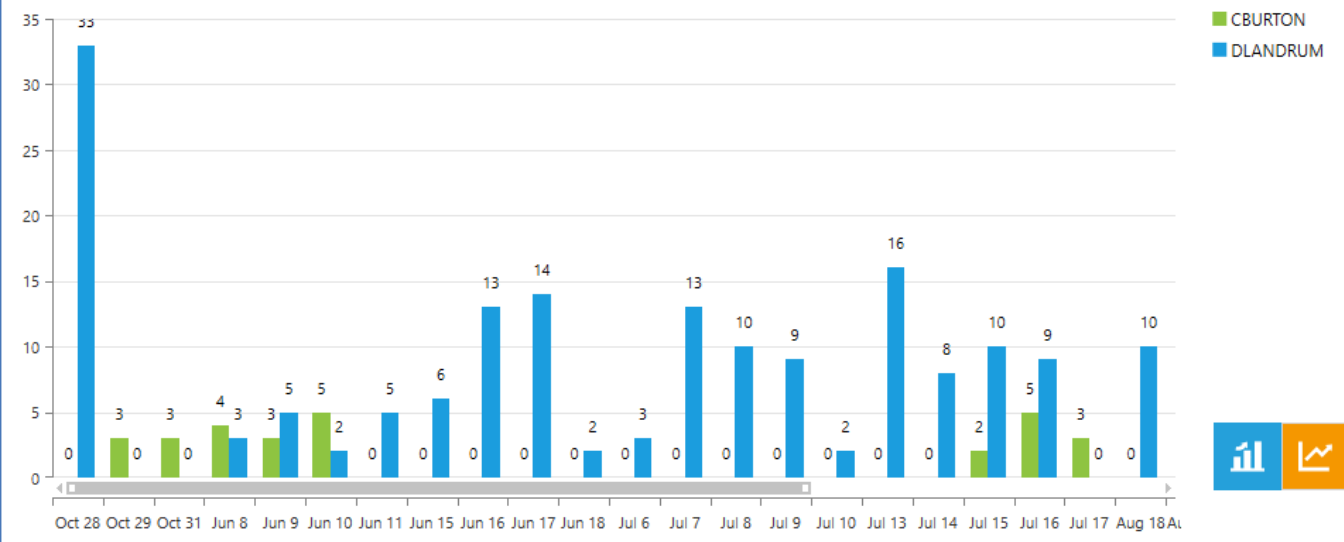


VIOLATIONS BY COMPANY FOR ALL STATES





Vault Inspection Progress



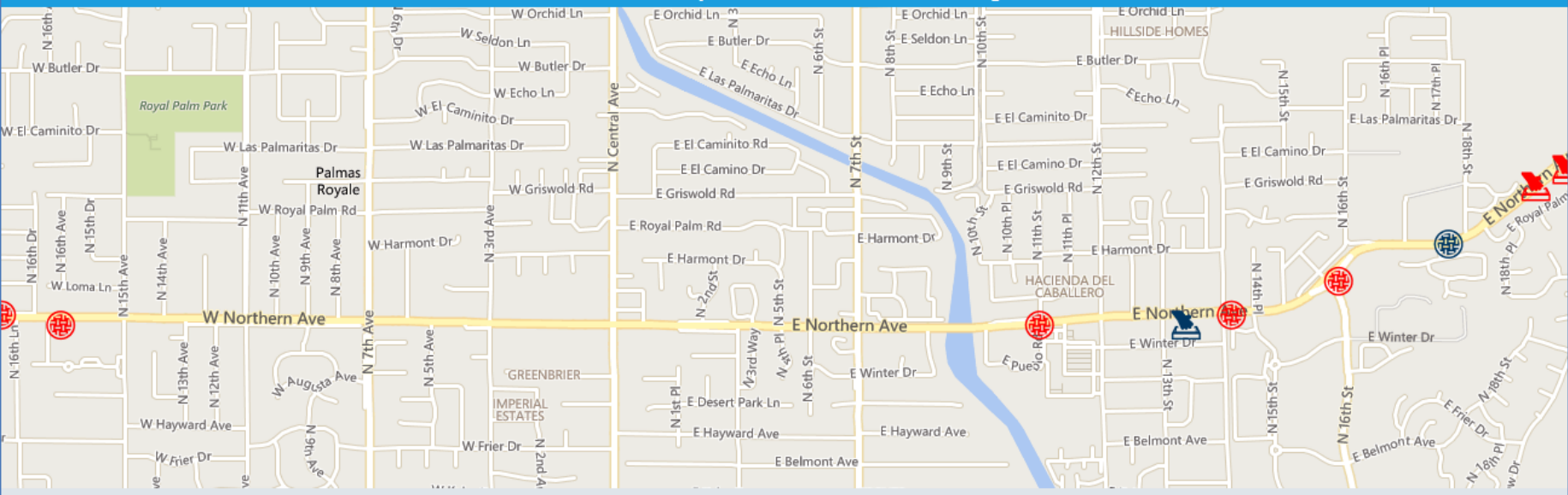
RUN RATE SUMMARY

total number of vaults
279

average vaults/day
8

average audit time/vault
16.01

VAULTS INVENTORIED ON : 7/9/2015 By : DLANDRUM (Click on a single bar on the chart above)



Conduit & Towers

15532FN - AZ - TUCSON

vault ID 15532FN auditor CBURTON audit date 7/16/2015 audit minutes 26.00

- Closed
- Violation
- century link (ctl)
- Open
- zayo (zay)
- safety concern in area

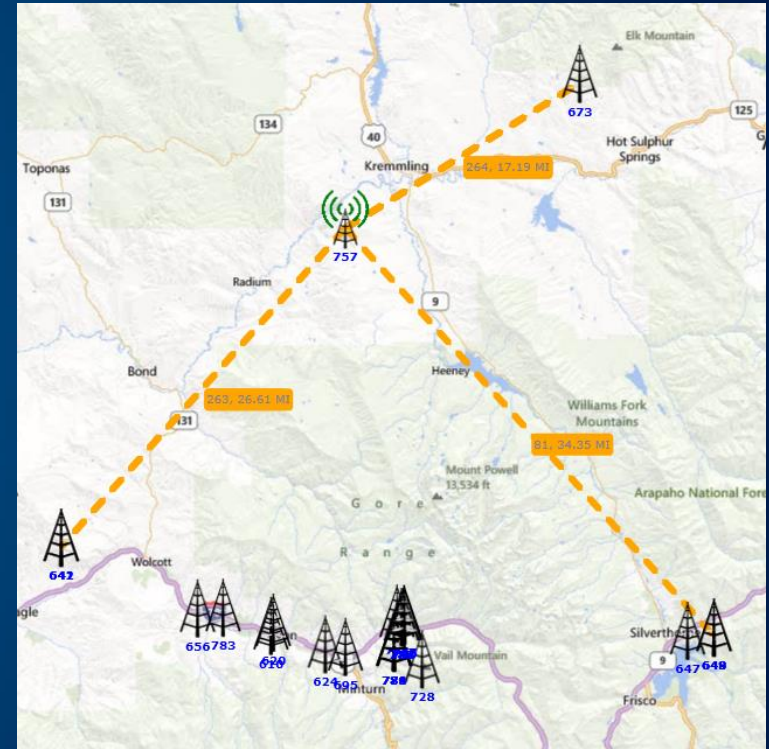
violations 8

century link (ctl)	Inner Duct (ID)
zayo (zay)	Excessive (EC)
century link (ctl)	Inner Duct (ID)
zayo (zay)	Tagging (T)
zayo (zay)	Racking (R)
zayo (zay)	Inner Duct (ID)
century link (ctl)	Inner Duct (ID)
century link (ctl)	Inner Duct (ID)

safety concerns 1

Missing La (ML) Additional step required

all photos 18



Move the mouse over any duct to see the occupant details on the butterfly diagram. Click on any photos to see the full size photo.

Software & Service Offerings



SOFTWARE

- ✓ Asset Management
- ✓ Work Order Tracking
- ✓ Cost Tracking
- ✓ Contract Management
- ✓ Pole and Conduit Capacity Visibility
- ✓ Fire & Safety Boundary Incorporation
- ✓ Pole Loading Integration

SERVICES

- ✓ OSP Field Services, Joint Use Inventory
- ✓ GO, NESC and compliance Inspections
- ✓ Conduit Inventory
- ✓ Pole Transfer Inventory and Analysis
- ✓ Consulting Services
- ✓ Managed Services

California can...

One State, One Process

- **Increase Safety & Reliability** through a Centralized Joint Use, Asset Management (poles & conduit) and Pole Loading Database
- **Accelerate Time to Market** for Attachers while **reducing expenses** (trips to pole, delayed permits)
- **Increase Transparency** to the CPUC through dashboards and automated reports
- **Reduce resource restrictions** within Engineering and Joint Use



California...One State, One Process.

notify[™]

alden.[®]

software • services • smarts