



Utility Supplier Diversity Program (General Order 156) Economic Opportunities in Environmental and Social Justice Communities

Date: July 2021



**California Public
Utilities Commission**

Thanks to:

Bezawit Dilgassa, Drisha Melton, Stephanie Green, Terrie Prosper, Allison Brown

Contents

- EXECUTIVE SUMMARY 1
- INTRODUCTION 2
- BACKGROUND 3
- METHODOLOGY 5
- UTILITIES 2019 SUPPLIER DIVERSITY PROGRAMS PERFORMANCE IN ESJ COMMUNITIES 7
 - 2019 Utilities Diverse Spend in ESJ Communities8
 - 2019 Utilities Diverse Spend in ESJ Communities by SIC Codes..... 14
 - 2019 Utilities Supplier Diversity Programs Activities in ESJ Communities 17
 - Technical Assistance, Capacity Building, and Outreach Activities in ESJ Communities 18
 - Supporting Business and Community-Based Organizations in ESJ Communities 19
 - Additional Supplier Diversity Programs in ESJ Communities20
 - Barriers or Challenges to Utilities Supplier Diversity Programs20
 - Supplier Clearinghouse Database and ESJ Communities.....23
- CONCLUSIONS 25
- RECOMMENDATIONS 26
- APPENDICES 27
- STANDARD INDUSTRIAL CLASSIFICATION (SIC) CODES DESCRIPTION 54

Executive Summary

The California Public Utilities Commission (CPUC) has reiterated its commitment to Environmental and Social Justice (ESJ) communities through its ESJ Action Plan (www.cpuc.ca.gov/esjactionplan). The ESJ Action Plan defines ESJ communities and provides goals and work plans to ensure that the CPUC considers the interests and concerns of ESJ communities in all sectors the CPUC regulates. One of the ESJ Action Plan's goals is to promote economic opportunities in ESJ communities through the CPUC's General Order 156 Utility Supplier Diversity Program (www.cpuc.ca.gov/supplierdiversity).

In 2019, investor-owned utility companies that participate in the CPUC Utility Supplier Diversity Program procured 47.5 percent of their total California diverse spend¹ with diverse suppliers located in ESJ communities. Park Water and Apple Valley Ranchos Water (Liberty Utilities Corp.) and Frontier Communications procured the most, 83.4 percent and 71.5 percent, respectively, while more than half of the utilities spent more than 40 percent of their 2019 California diverse spend with diverse suppliers in ESJ communities.

The Supplier Clearinghouse that the CPUC oversees maintains a database of certified diverse suppliers. 42.2 percent of the certified diverse suppliers with California addresses are in ESJ communities. The utilities use this database to verify diversity status and identify diverse suppliers.

In addition to contracting, in 2019 the utilities conducted and provided supplier diversity related activities, such as outreach, technical assistance, and capacity building education programs in ESJ communities. They also engaged, collaborated, and built relationships with community-based organizations, chambers of commerce, trade associations, and other advocacy groups representing the interests of diverse businesses and diverse communities.

Moving forward, to ensure the continued and increased inclusion of ESJ communities in utility supplier diversity programs as envisioned by the CPUC's ESJ Action Plan, the Utility Supplier Diversity Program staff will encourage and work with the utilities to develop deliberate strategies that target ESJ communities and metrics to measure progress.

¹ Procurement or contract expenditure with minority-, women-, disabled veteran-, and/or LGBT-owned business enterprises that have California addresses. LGBT refers to lesbian, gay, bisexual, and transgender.

Introduction

In 2019, the California Public Utilities Commission (CPUC) adopted an Environmental and Social Justice (ESJ) Action Plan to identify ways the CPUC can use its regulatory authority to address health and safety, consumer protection, and enforcement concerns within the sphere of regulated investor-owned utilities, railroads, and transportation companies.² The ESJ Action Plan also highlights strategies to engage communities, build relationships, and gather more information about the concerns Californians face, as well as how to communicate those concerns to the CPUC.

The ESJ Action Plan established nine goals covering all sectors the CPUC regulates. Goal seven refers to promoting economic and workforce development opportunities in ESJ communities. Since the CPUC Utility Supplier Diversity Program already works on increasing economic opportunities for businesses owned by historically disadvantaged groups, the CPUC Utility Supplier Diversity Program staff developed the following analyses to explore investor-owned utility companies' supplier diversity program performance in California ESJ communities and to recommend ways to improve engagement of ESJ communities to increase economic opportunities available through the utilities' supplier diversity programs.

For the analyses, CPUC Utility Supplier Diversity Program staff collected utilities' 2019 procurement expenditures with minority-, women-, disabled veteran-, LGBT³-owned business enterprises (collectively referred to as diverse suppliers) and information relating to their supplier diversity programs. Through a data request,⁴ staff asked the utilities that submit annual supplier diversity reports as described in CPUC General Order (GO) 156, to provide the spend and address of each diverse supplier counted in their 2019 report for both direct diverse suppliers and diverse subcontractors.⁵ CPUC staff also asked utilities to provide information and data on their technical assistance and capacity building programs, outreach activities, other programs that support diverse suppliers, and barriers that hinder their supplier diversity performance.

² www.cpuc.ca.gov/ESJactionplan

³ LGBT refers to lesbian, gay, bisexual, and transgender.

⁴ Data request issued 5/12/2020.

⁵ Utilities procure directly with diverse suppliers and encourage those suppliers (prime contractors) to subcontract with other diverse suppliers. Usually, direct suppliers are referred to as Tier I, and subcontractors as Tier II.

Background

The CPUC has promoted and monitored the diversification of utilities' supply chains for more than 30 years. The Utility Supplier Diversity Program is one of the earliest CPUC economic and social justice programs, and it has evolved into an imperative business strategy to increase competitiveness and promote innovation.

In the mid-1980s, the California Legislature passed Assembly Bill (AB) 3678 (Stats. 1986, ch. 1259) to encourage awarding a fair proportion of total utility contracts to women-owned business enterprises (WBE), and minority-owned business enterprises (MBE). Subsequently, the CPUC issued GO 156 to implement these statutes by establishing the Utility Supplier Diversity Program framework and guidelines. In Decision (D.) 92-06-030 (1992), and D.15-06-007 (2015), the CPUC amended GO 156 to add disabled veteran-owned business enterprises (DVBE) and lesbian, gay, bisexual, and/or transgender (LGBT)-owned business enterprises (LGBTBE) into the Program, respectively. In October 2019, Senate Bill (SB) 255 (Stats. 2019, ch. 407) amended Sections 366.2 and 8283 of the California Public Utilities Code (PU Code) to add new participants to the Utility Supplier Diversity Program and change the threshold requirements.

Currently, GO 156 encourages utilities to purchase at least 21.5 percent of their total procurement from diverse suppliers: 15 percent from MBEs, 5 percent from WBEs, and 1.5 percent from DVBEs. GO 156 does not have a percentage target goal for LGBTBEs now, but the CPUC is in the process of updating GO 156 to include the amendments made by SB 255 and to set a goal for LGBTBEs.

The CPUC's Utility Supplier Diversity Program oversees a clearinghouse called the Supplier Clearinghouse⁶ that verifies the eligibility of MBEs, WBEs, and LGBTBEs and maintains a database of MBEs, WBEs, DVBEs, and LGBTBEs (WMDVLGBTBE).⁷ The Supplier Clearinghouse exports the DVBE database certified by the California Department of General Services.

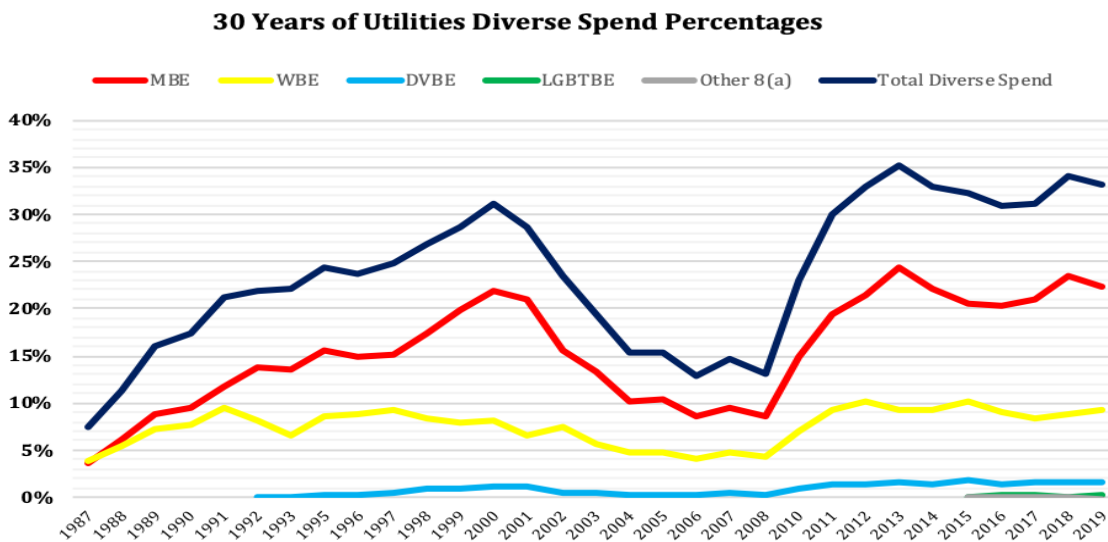
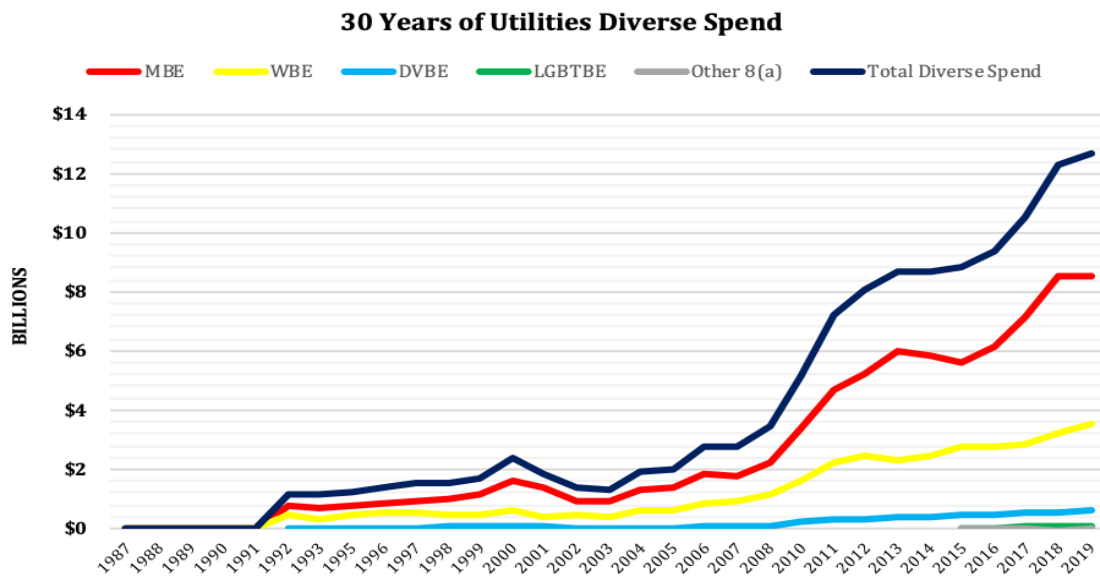
The utilities participating in the Utility Supplier Diversity Program submit annual supplier diversity performance and plans reports as described in the GO 156.⁸ As the charts below describe, since the late 1980s, utilities have been steadily increasing the proportion of their procurement from diverse suppliers: from 7.5 percent diverse spend in 1987, to 33.2 percent in 2019.⁹

⁶ www.thesupplierclearinghouse.com

⁷ GO 156, Section 1.3.22: Clearinghouse is a CPUC-supervised program that verifies women-, minority-, and LGBT-owned businesses' status and maintains a public database of WMDVLGBTBEs for the use of utilities.

⁸ GO 156 Sections 9 and 10.

⁹ GO 156 Section 1.3.13 recognizes U.S. Small Business Administration's disadvantaged certification called 8 (a).



For more than 30 years, the Utility Supplier Diversity Program has promoted and included diverse suppliers in utility procurement activities to ensure the inclusion of historically underrepresented groups in the California economy. The CPUC, through the Utility Supplier Diversity Program, has made strides in reducing socio-economic divides and championing for economic and social justice for a more competitive and vibrant California economy.¹⁰

¹⁰ California Public Utilities Code §8281.

Methodology

The CPUC ESJ Action Plan identifies ESJ communities as those predominantly of color or low-income; underrepresented in the policy setting or decision-making process; subject to a disproportionate impact from one or more environmental hazards; and likely to experience disparate implementation of environmental regulations and socioeconomic investments. Based on this description, the ESJ Action Plan recognizes the following communities as inclusive of ESJ communities (but not limited to them):

- Disadvantaged communities: those located in the most environmentally burdened California census tracts as determined by California Environmental Protection Agency’s (Cal EPA) [CalEnviroScreen](#) tool;¹¹
- All Tribal lands;
- Low-income households (household incomes below 80 percent of the area median income); and,
- Low-income census tracts (census tracts where aggregated household incomes are less than 80 percent of area or state median income).

To track California’s climate investments in disadvantaged and low-income communities, the California Air Resources Board (CARB) has developed a searchable tool that identifies whether a California address is in a disadvantaged and/or low-income community.¹² For disadvantaged communities, the tool adopted Cal EPA’s CalEnviroScreen data, and for low-income communities, used American Community Survey, American Fact Finder, and California Department of Housing and Community Development (HCD) data to determine household incomes at or below 80 percent of the statewide median income, or household incomes at or below the threshold designated as low-income.¹³

CARB’s tool covers the ESJ communities defined and identified in the CPUC ESJ Action Plan. Even though the tool is not inclusive of all ESJ communities, it still allows for analyses of selected ESJ communities to understand utilities supplier diversity performance in those communities. Therefore, Utility Supplier Diversity Program staff used CARB’s disadvantaged and low-income communities data for the analyses of utilities supplier diversity spend and activities in ESJ communities.

The utilities provided the following data and information that staff used, along with CARB’s data, to assess ESJ communities engagements. Staff also used the Supplier Clearinghouse database to analyze the availability of certified diverse suppliers in ESJ communities.

¹¹ <https://oehha.ca.gov/calenviroscreen/report/calenviroscreen-30>

¹² <https://ww3.arb.ca.gov/cc/capandtrade/auctionproceeds/communityinvestments.htm>

¹³ CARB’s [Priority Population Investments](#) website describes the methodologies used in detail and provides access to the searchable map tool and data.

- Business address of each diverse supplier the utilities contracted with in 2019, both directly (Tier I), and indirectly through prime contractors (Tier II), including:
 - » Diverse spend for each address.
 - » Diverse category for each address.¹⁴
 - » Goods and/or services Standard Industrial Classification (SIC)¹⁵ code for each address.
- Addresses and description of the utilities' technical assistance and capacity building programs in 2019.
- List of the utilities 2019 outreach activities with addresses.
- Organizations the utilities collaborated with and supported in 2019 such as chambers of commerce, community-based organizations (CBO), business organizations, trade associations, advocacy groups, etc.
- Challenges and barriers the utilities face in implementing their supplier diversity programs.

Staff made the following assumptions in analyzing the information and data:

- If a diverse supplier has a business address in a disadvantaged and/or low-income community,¹⁶ then a utility spend with this business represents a spend in an ESJ community.
- Technical assistance and capacity building programs in addresses of disadvantaged and/or low-income communities will be considered as supporting ESJ communities.
- Outreach activities in addresses that are disadvantaged and/or low-income denote outreach in ESJ communities.

¹⁴ Minority-owned business enterprise (MBE), Women/Minority-owned business enterprise (WMBE), Woman-owned business enterprise (WBE), Disabled veteran-owned business enterprise (DVBE), LGBT-owned business enterprise (LGBTBE), African American business (AA), Hispanic American business (HA), Asian/Pacific American business (APA), Native American business (NA).

¹⁵ SIC codes categorize the industries companies belong to based on their business activities <https://www.osha.gov/data/sic-manual>.

¹⁶ Based on CARB's disadvantaged and low-income communities data tool.

Utilities 2019 Supplier Diversity Programs Performance in ESJ Communities

As mentioned above, CPUC-regulated utilities have been participating in the CPUC's Utility Supplier Diversity Program successfully for more than 30 years, addressing socio-economic gaps in California. With the CPUC ESJ Action Plan, the CPUC is taking a broader step to consider additional socially, economically, and environmentally disadvantaged communities. In the following analyses, Utility Supplier Diversity staff will detail the utilities' diverse spend¹⁷ and supplier diversity activities in 2019 to understand how much of the spend and activities correspond to ESJ communities.¹⁸

26 utilities responded to staff's data request:

- AT&T
- California American Water Company (Ca-Am Water)
- California Water Service (Cal Water)
- CenturyLink
- Charter Communications (Charter)
- Comcast California (Comcast)
- Cox Communications (Cox)
- Frontier Communications (Frontier)
- Golden State Water Company (Golden State Water)
- Liberty Utilities, LLC – CalPeco Electric (Liberty Utilities)
- Liberty Utilities Corp. – Park Water and Apple Valley Ranchos Water (Park & Apple Valley Water)
- Pacific Power (PacifiCorp)
- Pacific Gas and Electric Company (PG&E)
- San Diego Gas & Electric (SDG&E)

¹⁷ Diverse spend is utilities procurement expenditures with MBEs, WBEs, DVBEs, and/or LGBTBEs.

¹⁸ CARB's disadvantaged and low-income communities data is used to identify diverse spend in ESJ communities.

- San Gabriel Valley Water Company (San Gabriel Valley)
- San Jose Water Company (San Jose Water)
- Southern California Edison (SCE)
- Southern California Gas Company (SoCalGas)
- Southwest Gas
- Sprint Corporation (Sprint)
- Suburban Water Systems (Suburban Water)
- T-Mobile West, LLC and MetroPCS California, LLC (T-Mobile)
- Trans Bay Cable, LLC (Trans Bay Cable)
- U.S. TelePacific Communications (TPx)
- Verizon Wireless (Verizon)
- Wild Goose Storage, LLC (Wild Goose Storage)

The above utilities provided their 2019 Tier I and Tier II diverse suppliers addresses, with each spend amount and corresponding SIC code. The utilities also provided information on their 2019 outreach activities, technical assistance and capacity building programs, organizations they are affiliated with, and their challenges.

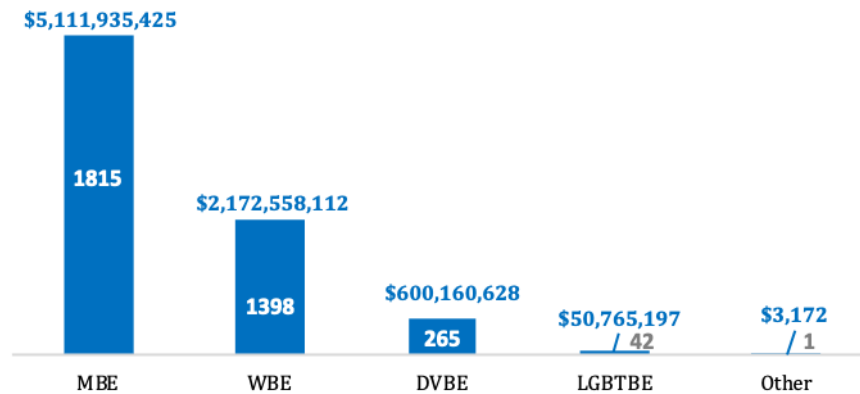
2019 Utilities Diverse Spend in ESJ Communities

Utility Supplier Diversity Program staff considered only those spend with diverse suppliers that have California business addresses since CARB's data identifies only California addresses as disadvantaged and/or low-income communities. In addition, some utilities provided only spend with diverse suppliers that have California business addresses. The utilities may have procured from non-diverse suppliers in ESJ communities; however, those spend are not reflected in the analyses.¹⁹

¹⁹ Note: the utilities may have procurement spend in ESJ communities that are not with diverse suppliers. The utilities total spend in ESJ communities will not be reflected in the analyses, only the total diverse spend in ESJ communities.

The utilities²⁰ reported a total of \$7.9 billion Tier I and Tier II diverse spend with 3,521²¹ California business addresses in 2019.²²

Number of Diverse Suppliers with California Addresses and Diverse Spend



From the 3,521 addresses indicated by the utilities:

- 1,040 (29.5%) are in disadvantaged communities (DC).
- 1,383 (39.3%) are in low-income communities (LC).
- 775 (22%) are in both DCs and LCs.
- 1,873 (53.2%) are in non-DCs and non-LCs.

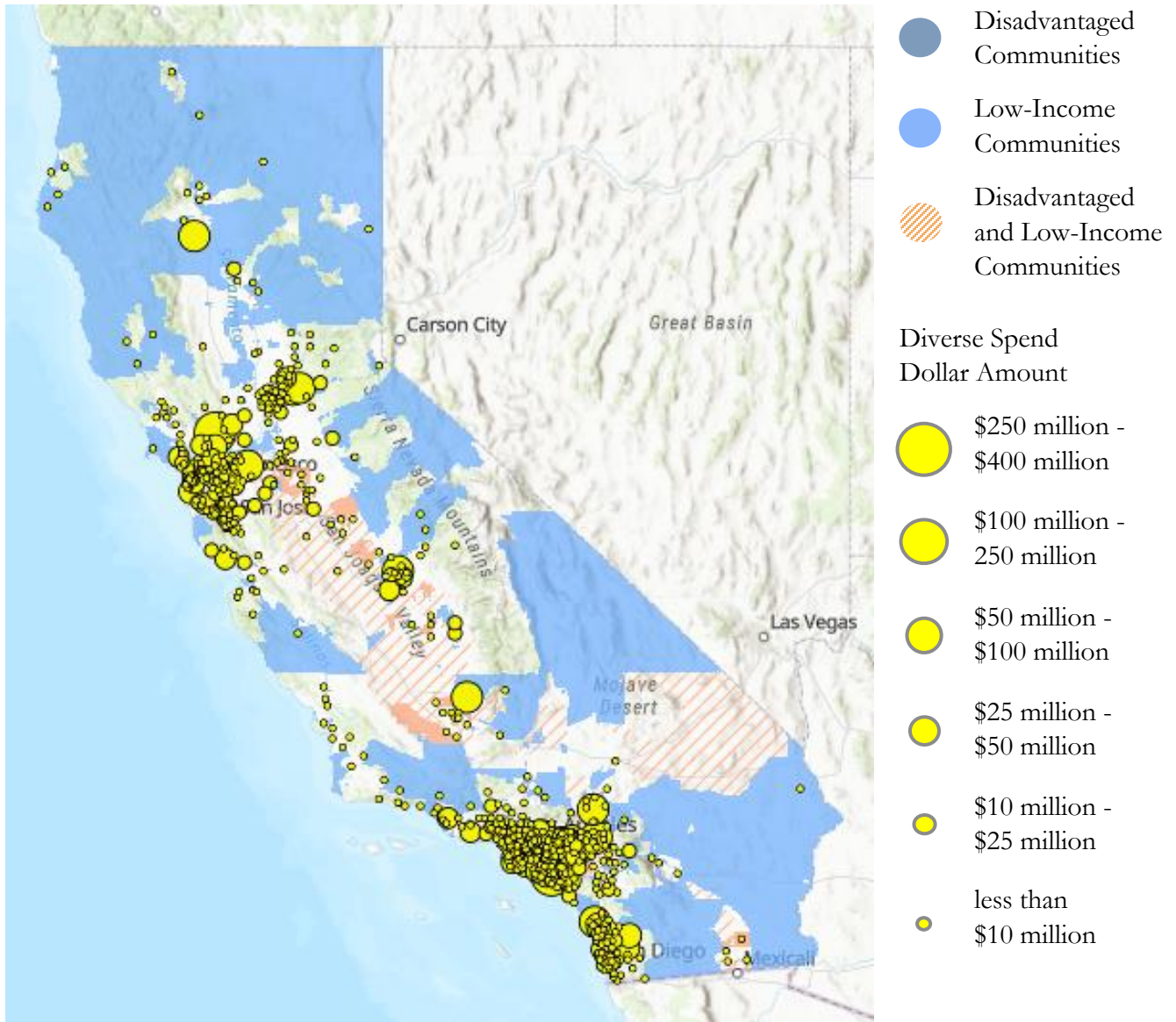
As the map below describes, these addresses are concentrated in northern (Bay and Sacramento areas) and southern (Los Angeles and San Diego areas) California, representing the majority share of the utilities diverse spend in 2019. The following interactive maps offer a more versatile view of each diverse supplier spend by zip code and ESJ community: [interactive map 1](#) and [interactive map 2](#).

²⁰ The Tier I and Tier II data provided by Cox Communications and CenturyLink is excluded: Cox Communications’ diverse spend data includes diverse categories not recognized by GO 156 and CenturyLink is in the process of verifying the 2019 diverse spend information after its merger with Level 3 Communications.

²¹ Different utilities may contract with the same diverse suppliers, as a result, the total number of addresses indicated here may contain duplicate addresses since the total is the sum of the total number of addresses provided by the individual utilities.

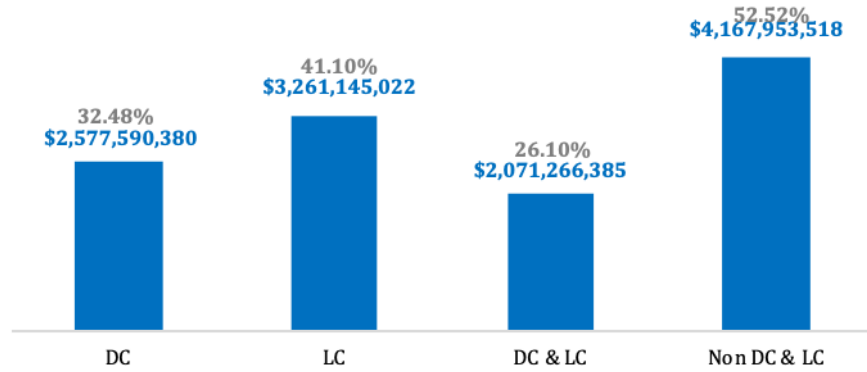
²² In the Appendices, see Attachment A for the total utilities 2019 Tier I and Tier II diverse spend data in disadvantaged and low-income communities.

2019 Utilities Diverse Spend by Zip Codes



Almost half of the addresses (46.8%) are in ESJ communities with 47.5 percent of the total spend with California addressed diverse suppliers.

Spend with Diverse Suppliers in ESJ Communities and Percentages of 2019 California Diverse Spend



Based on the addresses and the diverse spend information provided, in 2019, the utilities:

- Spent 44.2 percent of their total MBE procurement in ESJ communities with 726 MBEs.
- Contracted 148 Women/Minority Business Enterprises (WMBE)²³ in ESJ communities to spend 78 percent of their total WMBE spend.
- Engaged 668 WBEs and spent 49.3 percent of their total WBE dollars in ESJ communities.
- Identified 93 DVBEs in ESJ communities that received 17.1 percent of their total DVBE spend.
- Worked with 12 LGBTBEs in ESJ communities and spent 2.9 percent of their total LGBTBE dollar amount.

As described above and as the table below indicates, except for DVBE and LGBTBE diverse categories, the utilities spent close to 50 percent or more than 50 percent of the diverse category total spend in ESJ communities.²⁴

²³ WMBE: 51% or more combined ownership of a woman and a minority male, and the woman and the minority male exercise at least 51% control of the business.

²⁴ In the Appendices, see Attachment C for additional ESJ spend data.

USDP ECONOMIC OPPORTUNITIES IN ENVIRONMENTAL
AND SOCIAL JUSTICE COMMUNITIES

Diverse Business Category	No. of Diverse Suppliers	2019 Diverse Spend	Percentage of Diverse Category Spend
MBE	1504	\$4,125,428,231	100.00%
MBE & DC	517	\$1,540,273,486	37.34%
MBE & LC	590	\$1,503,873,843	36.45%
MBE & DC & LC	381	\$1,220,713,088	29.59%
MBE & Non-DC&LC	778	\$2,301,993,990	55.80%
WMBE	311	\$986,507,194	100.00%
WMBE & DC	102	\$313,021,285	31.73%
WMBE & LC	122	\$764,185,444	77.46%
WMBE & DC&LC	76	\$308,119,123	31.23%
WMBE & Non-DC&LC	163	\$217,419,589	22.04%
WBE	1398	\$2,172,558,112	100.00%
WBE & DC	360	\$636,479,941	29.30%
WBE & LC	575	\$912,167,028	41.99%
WBE & DC&LC	267	\$477,679,068	21.99%
WBE & Non-DC&LC	730	\$1,101,590,211	50.70%
DVBE	265	\$600,160,628	100.00%
DVBE & DC	57	\$87,369,755	14.56%
DVBE & LC	83	\$79,450,575	13.24%
DVBE & DC&LC	47	\$64,309,193	10.72%
DVBE & Non-DC&LC	172	\$497,649,490	82.92%
LGBTBE	42	\$50,765,197	100.00%
LGBTBE & DC	3	\$442,741	0.87%
LGBTBE & LC	12	\$1,464,960	2.89%
LGBTBE & DC&LC	3	\$442,741	0.87%
LGBTBE & Non-DC&LC	30	\$49,300,238	97.11%
Total CA Diverse Spend	3521	\$7,935,422,535	

The data analysis thus far positively indicates that the utilities are present in ESJ communities, engaging diverse suppliers for utility contracts, and contributing to ESJ communities' economic activities.

USDP ECONOMIC OPPORTUNITIES IN ENVIRONMENTAL AND SOCIAL JUSTICE COMMUNITIES

For the individual utilities,²⁵ as the table below indicates, Park & Apple Valley Water and Frontier spent the most of their 2019 California diverse spend in ESJ communities: 83.4 percent and 71.5 percent, respectively.

Utility	No. of Diverse Suppliers in ESJ Communities	2019 Diverse Spend in ESJ Communities	ESJ Spend Percentage of 2019 CA Diverse Spend
Park & Apple Valley Water	32	\$7,738,539	83.43%
Frontier	25	\$32,419,609	71.52%
Golden State Water	43	\$30,534,405	66.54%
Sprint	15	\$377,234,162	60.69%
Cal Water	71	\$25,440,193	56.20%
SCE	305	\$1,035,512,034	54.46%
SoCalGas	276	\$348,451,052	52.71%
Suburban Water	29	\$6,836,355	50.39%
PG&E	339	\$1,397,340,097	49.01%
AT&T	52	\$50,952,968	48.17%
TPx	4	\$73,684	44.87%
Ca-Am Water	47	\$13,841,689	42.84%
Comcast	31	\$8,857,825	38.45%
Verizon	41	\$195,478,033	37.92%
San Gabriel Valley Water	59	\$9,321,036	36.28%
Trans Bay Cable	6	\$95,031	31.58%
SDG&E	212	\$169,787,112	30.09%
Wild Goose Storage	3	\$66,260	22.13%
Charter	6	\$2,357,425	14.66%
San Jose Water	19	\$1,853,398	14.27%
T-Mobile	7	\$49,161,698	12.60%
Southwest Gas	13	\$3,495,820	8.36%
Liberty Utilities	10	\$355,576	5.93%
PacifiCorp	3	\$265,014	4.17%

²⁵ In the Appendices, see Attachment B for each utility detailed Tier I and Tier II spend data in disadvantaged and low-income communities.

Of the remaining utilities, Golden State Water, Sprint, Cal Water, SCE, SoCalGas, and Suburban Water spent more than 50 percent of their 2019 diverse spend in ESJ communities while PG&E, AT&T, TPx, and Ca-Am Water spent more than 40 percent. This means that out of the 24 utilities listed, half of them reported more than 40 percent of their 2019 California diverse spend going to diverse suppliers with addresses in ESJ communities.

As the table below shows, the water utilities, combined, spent more than half of their diverse spend in ESJ communities while the energy utilities spent close to half of their diverse spend.

Utility Industry	No. of Diverse Suppliers in ESJ Communities	ESJ Spend Percentage of 2019 CA Diverse Spend
Energy utilities	1,167	48.99%
Telecommunications, Wireless, and Cable companies	181	41.71%
Water utilities	300	51.66%

2019 Utilities Diverse Spend in ESJ Communities by SIC Codes

The utilities also provided the SIC codes of their diverse spend with California addressed diverse suppliers.²⁶ For 2019, the utilities reported diverse spend in 69 SIC codes.²⁷ Based on the data provided for the SIC codes, the utilities spent 47 percent of total California diverse spend in ESJ communities in 60 SIC codes.

In 11 SIC codes, relating to spend in work cloth, passenger transportation, water transportation, general merchandises and food, insurance, investment, lodging and safety, the utilities diverse spend was 100 percent in ESJ communities as the table below shows.

SIC Code	SIC Code Description	Diverse Suppliers with CA Addresses	2019 CA Diverse Spend	Spend in ESJ Communities
SIC 01	Agricultural Production Crops	1	\$410,195	100%
SIC 22	Textile Mill Products	1	\$1,850	100%
SIC 41	Local and Suburban Transit and Interurban Highway Passenger Transportation	1	\$44	100%
SIC 44	Water Transportation	1	\$976,434	100%
SIC 53	General Merchandise Stores	2	\$510,680	100%

²⁶ Some utilities did not provide the SIC codes for their diverse spend or provided the SIC codes for only some of their diverse spend.

²⁷ In the Appendices, see Attachment D for detailed utilities SIC codes diverse spend in ESJ communities and Attachment F for the descriptions of the SIC codes.

USDP ECONOMIC OPPORTUNITIES IN ENVIRONMENTAL AND SOCIAL JUSTICE COMMUNITIES

SIC 54	Food Stores	2	\$24,334	100%
SIC 63	Insurance Carriers	1	\$5,751	100%
SIC 64	Insurance Agents, Brokers, And Service	3	\$653,055	100%
SIC 67	Holding and Other Investment Offices	1	\$6,731	100%
SIC 70	Hotels, Rooming Houses, Camps, And Other Lodging Places	1	\$184,921	100%
SIC 92	Justice, Public Order, And Safety	2	\$43,830	100%

In areas such as travel agency service, laundry, photography, automotive repair, truck and car rental, electrical and air condition repair service, health service, social service, and rehabilitation service, around 90 percent of the utilities diverse spend was in ESJ communities.

SIC Code	SIC Code Description	Diverse Suppliers with CA Addresses	2019 CA Diverse Spend	Spend in ESJ Communities
SIC 39	Miscellaneous Manufacturing Industries	10	\$8,234,134	98.34%
SIC 47	Transportation Services	14	\$372,696,948	99.01%
SIC 51	Wholesale Trade-non-durable Goods	64	\$71,752,130	90.89%
SIC 72	Personal Services	7	\$6,884,589	90.63%
SIC 75	Automotive Repair, Services, And Parking	26	\$4,565,015	90.33%
SIC 76	Miscellaneous Repair Services	17	\$3,960,602	97.07%
SIC 80	Health Services	10	\$20,123,635	96.39%
SIC 83	Social Services	5	\$1,229,859	96.14%

Between 80 to 90 percent of the utilities diverse spend in forest management, paper products, electrical equipment and component, building materials, environment quality and waste management went to ESJ communities as the table below indicates.

SIC Code	SIC Code Description	Diverse Suppliers with CA Addresses	2019 CA Diverse Spend	Spend in ESJ Communities
SIC 08	Forestry	4	\$5,758,542	89.75%
SIC 26	Paper and Allied Products	11	\$1,545,802	85.72%
SIC 36	Electronic and Other Electrical Equipment and Components, Except Computer Equipment	70	\$73,753,691	80.83%

USDP ECONOMIC OPPORTUNITIES IN ENVIRONMENTAL AND SOCIAL JUSTICE COMMUNITIES

SIC 52	Building Materials, Hardware, Garden Supply, And Mobile Home Dealers	12	\$5,633,979	80.53%
SIC 95	Administration of Environmental Quality and Housing Programs	6	\$1,109,213	81.98%

In landscaping, heavy construction, building construction, metal work, machinery, transportation equipment, warehousing, and real-estate, more than 50 percent and less than 80 percent of the utilities diverse spend represents ESJ communities as described in the table below.

SIC Code	SIC Code Description	Diverse Suppliers with CA Addresses	2019 CA Diverse Spend	Spend in ESJ Communities
SIC 07	Agricultural Services	64	\$550,664,067	50.54%
SIC 16	Heavy Construction Other Than Building Construction Contractors	211	\$933,192,129	50.49%
SIC 17	Construction Special Trade Contractors	377	\$664,051,894	63.78%
SIC 34	Fabricated Metal Products, Except Machinery and Transportation Equipment	42	\$24,522,027	50.69%
SIC 35	Industrial and Commercial Machinery and Computer Equipment	44	\$58,225,965	73.62%
SIC 37	Transportation Equipment	28	\$16,630,061	56.47%
SIC 42	Motor Freight Transportation and Warehousing	83	\$85,749,172	50.70%
SIC 55	Automotive Dealers and Gasoline Service Stations	33	\$13,250,626	77.56%
SIC 59	Miscellaneous Retail	28	\$1,261,948	58.95%
SIC 65	Real Estate	10	\$14,864,055	57.58%
SIC 89	Miscellaneous Services	111	\$566,551,926	59.05%

In summary, out of the 69 reported SIC codes, in 35 SIC codes, the utilities spent more than 50 percent of the share of the total SIC code diverse spend in ESJ communities.

However, in the goods and services SIC codes listed in the table below, such as logging, asphalt paving, furniture and furnishing, credit institutions, videos, entertainment, educational service, maintenance worker, the utilities had no diverse spend in ESJ communities.

SIC Code	SIC Code Description	Diverse Suppliers with CA Addresses	2019 CA Diverse Spend	Spend in ESJ Communities
SIC 24	Lumber and Wood Products, Except Furniture	1	\$971,255	0.00%
SIC 29	Petroleum Refining and Related Industries	3	\$485,860	0.00%
SIC 57	Home Furniture, Furnishings, and Equipment Stores	2	\$1,264,771	0.00%
SIC 61	Non-depository Credit Institutions	2	\$8,390,940	0.00%
SIC 78	Motion Pictures	1	\$1,650	0.00%
SIC 79	Amusement and Recreation Services	1	\$225,119	0.00%
SIC 82	Educational Services	4	\$395,346	0.00%
SIC 88	Private Households	1	\$1,208,502	0.00%
SIC 94	Administration of Human Resource Programs	2	\$281,515	0.00%

As the analyses above describes, the utilities are procuring goods and services from diverse suppliers in ESJ communities and most likely effecting economic growth chain reactions. However, these efforts and benefits may not be part of a deliberate strategy to support and advance ESJ communities, but rather a consequence of the utilities’ supplier diversity programs. The CPUC will work with the utilities to ensure ESJ communities are incorporated into their supplier diversity programs.

2019 Utilities Supplier Diversity Programs Activities in ESJ Communities

To increase the diversification of utilities’ supply chain and ensure a steady pipeline of diverse suppliers, GO 156 provides for utilities to include technical assistance, capacity building, and outreach programs in their supplier diversity programs. Through these programs, utilities promote their supplier diversity programs, develop diverse suppliers, support diverse communities and organizations, and collaborate with advocacy groups, trade associations, and business organizations.²⁸

In response to the Utility Supplier Diversity Program staff data request, the utilities provided data and information on their technical assistance, capacity building, and outreach activities as well as a list of the associations and organizations they collaborated with in 2019.

²⁸ GO 156, Section 6.2.

Technical Assistance, Capacity Building, and Outreach Activities in ESJ Communities

The utilities conducted various outreach activities nationwide and throughout California in 2019 that combined promoting supplier diversity and providing technical assistance and capacity building information and education. The utilities organized, participated, and/or attended business networking events, webinars, workshops, panel discussions, etc., as well as provided mentorships and higher education opportunities with notable universities.

Furthermore, in 2019, the CPUC Small Business Program, in collaboration with the Joint Utilities,²⁹ hosted two small/diverse Business Expos to provide opportunities for small and diverse suppliers to network and learn from utility representatives. The Expo in Southern California was in an ESJ community.

Not all the outreach activities data the utilities provided has a corresponding address to determine if the activity was conducted in an ESJ community. However, based on the addresses provided, the utilities had programs in ESJ communities as shown below.

- Cable and communications companies participated in more than 50 outreach activities in 2019. Out of the 47 events identified with addresses, 13 were outside California, 12 in non-ESJ communities, and 22 in ESJ communities. Some of the events held in ESJ communities are:
 - » 9th Annual Cable Supplier Diversity Symposium
 - » Los Angeles LGBTBE Frontier Supplier Session
 - » 1st Annual Utilities Based Service-Disabled Veteran Summit
 - » American Indian Chamber of Commerce “How To Prepare For Utilities & Government Contracts”
 - » Pacific Asian Consortium In Employment How to Do Business with Utilities Utility Sector Panel Discussion
 - » Western Regional Minority Supplier Development Council (WRMSDC) Informal Guide to Help MBEs Navigate Supplier Diversity and Win
- Energy and natural gas utilities reported more than 150 technical assistance and capacity building events. Of the 148 activities identified with addresses, 16 were webinars, 14 were outside California, 59 in non-ESJ communities, and 59 in ESJ communities. Some examples of the events in ESJ communities are:
 - » Elevate: A Procurement Symposium by California Hispanic Chambers of Commerce
 - » Branding and Designing for Competitive Edge
 - » Building Operational Capacity: Process Flow, Risk Management & Document Management

²⁹ The utilities that participate in the GO 156 program.

- » Defining and Developing your Value Proposition
- » Goal Setting for Increased Business Performance and Long-term Professional Growth
- » How to Prepare for Utilities & Government Contracts
- » LEAN for Small Business Enterprises
- Water utilities identified 12 events: three were outside California, six in non ESJ communities, and three in ESJ communities. Examples of the events in ESJ communities are:
 - » California Water Association (CWA) Meet the Primes Showcase & Summit
 - » CWA Pipeline into Procurement

The information provided by the utilities indicates that they do conduct outreach and educational programs in ESJ communities because of their supplier diversity programs. Moving forward, a deliberate targeted approach may ensure a continued and increased engagement of ESJ communities in utilities’ supplier diversity programs. The CPUC will work with utilities to ensure such a strategy is incorporated into their work.

Supporting Business and Community-Based Organizations in ESJ Communities

The utilities identified 133 business and professional organizations they supported in 2019 to promote supplier diversity, provide education and counsel, facilitate access to capital, engage diverse suppliers, diversify professional services and emerging technologies, etc. These organizations advocate for and support diverse communities, businesses, and professionals as well as small businesses regardless of whether they are in ESJ communities. Therefore, diverse suppliers in ESJ communities are represented by these organizations through which they can access utilities resources and support.³⁰

Community Represented by the Organization	No. of Organizations
MBE	10
African American	16
Hispanic America	13
Asian/Pacific American	12
Native American	4
WBE	13
DVBE	10
LGBTBE	11

³⁰ In the Appendices, see Attachment E for the list of organizations/associations.

Small/Diverse Business	14
Others	30
Total	133

To ensure ESJ communities are targeted and supported, it may be necessary to develop a list of community-based organizations focused and located in ESJ communities for engagement and collaboration with deliberate efforts to develop diverse suppliers in ESJ communities. The CPUC will ensure the utilities develop such a list.

Additional Supplier Diversity Programs in ESJ Communities

The utilities also reported other programs available to assist diverse suppliers.³¹ The most common additional program is prompt payment, where utilities have accelerated or timely payment programs in place to ensure diverse suppliers are not encumbered with cash flow issues. The other programs mentioned assist diverse suppliers with access to capital and develop diverse suppliers through on-the-job trainings.

The utilities did not provide complete data that shows who benefited from these programs to determine if beneficiaries were from ESJ communities. However, these programs are available to all diverse suppliers regardless of the communities they come from.

Barriers or Challenges to Utilities Supplier Diversity Programs

Most utilities supplier diversity strategies include diversifying each category of goods and services. However, the utilities have challenges identifying diverse suppliers in the following list of goods and services.

Areas of Goods and Services Difficult to find Diverse Suppliers	SIC Code
Agricultural Services, Landscaping Contractors	7
Building Construction, General Contractors	15
Drilling and Rehab, Industrial Electrical Contractors, Fencing Contractors, Generator Maintenance, Outside Plant Construction	17
Pipe Manufacturing, Valve and Pipe Fitting Supply	34
Pump Maintenance and Repair	35
Generator Leasing	36
Network Equipment, Wireless Devices	36

³¹ AT&T, Ca-Am Water, Cal Water, Charter, Liberty Utilities, Park & Apple Water, PG&E, PacifiCorp, SDG&E, San Gabriel Valley, SoCalGas, Sprint, T-Mobile, Verizon, and Wild Goose Storage.

USDP ECONOMIC OPPORTUNITIES IN ENVIRONMENTAL
AND SOCIAL JUSTICE COMMUNITIES

Transportation Equipment, Logistics	37
Measuring Optical Goods	38
Engineering Supply	39
Motor Freight Transportation and Warehousing, Logistics	42
Aviation Services	45
Communications	48
Core Gas, Fuel Procurement for Non-Generation (Gas and Other Services), Power Procurement (Electric Services), Remediation, Contaminated Properties	49
Handsets	50
Building Materials	52
Banking, Financial Institutions, Depository Institutions	60
Financial Services, Non-depository Institutions	61
Security and Commodity Brokers, Dealers, Exchanges, and Services	62
Insurance Agents, Brokers, and Service	64
Real Estate	65
Business Services, Marketing and Advertising, Closed Circuit Television (CCTV) Storm Drain Inspection, Field Services, Generator Leasing, Generator Maintenance, Parts Supply-Wholesale Warehouse, Professional and Temporary Services, Water Treatment Process Design	73
Water Tank Cleaning Services	76
Legal Services	81
Engineering, Accounting, Research, Management, and Related Services; Facility Maintenance; Fleet Leasing/Purchasing; Human Resources	87
Natural Gas Storage	
Nuclear Decommissioning - Capital, Insurance, and Safety Requirements	

In addition, the utilities identified the following issues affecting their supplier diversity program performance and progress:

- Internal organization barriers:
 - » New business models, programs, innovations, priorities, etc., to improve value and reduce cost.

- » Reluctance of utilities' staff to establish new business relationships with diverse suppliers in the presence of already existing familiar and comfortable business relationships.
- » Utilities strategic sourcing to prime contractors excluding diverse suppliers that are usually small businesses.
- » Services provided in-house reduces opportunities for diverse suppliers such as legal, accounting, finance, and audit.
- » Difficult to internally promote California supplier diversity program in a centralized supply chain at a national level and to disaggregate California spend data for GO 156 reports.
- » Inability to engage diverse suppliers due to the specialized and proprietary nature of equipment utilities use.
- » Challenges collecting diverse subcontracting spend data from prime contractors.
- Diverse supplier's recruitment barriers:
 - » Challenges identifying diverse suppliers that meet the scale, scope, and technical expertise of utilities' needs.
 - » Lack of LGBTBEs in categories with higher dollar spend.
 - » Absence of diverse suppliers with unionized labor force in areas such as vegetation management.
 - » Diverse suppliers electing not to obtain or renew their Supplier Clearinghouse certification.
 - » Relocation of diverse suppliers due to high living cost.
 - » Diverse suppliers exiting marketplaces due to retirements, mergers, and acquisitions.
 - » Limited availability of diverse suppliers in industries such as emerging technologies, renewable energy, and natural gas.
 - » The bulk of wireless companies spend is on the purchase of handsets and network equipment from large Original Equipment Manufacturers (OEMs) that are not diverse.
- Safety and insurance requirements barriers:
 - » Diverse suppliers find it challenging meeting the utilities safety, insurance, and bonding requirements.
 - » There is hesitancy among diverse suppliers to comply with safety/insurance verification processes.
 - » Certain insurance requirements such as wildfire, are either expensive or unavailable.
 - » The cost of keeping pace with the evolving cybersecurity, insurance, and safety standards could be burdensome for diverse suppliers.
- Demographic and geographical barrier:

- » Difficult finding diverse suppliers in remote and sparsely populated regions.
- The digital divide will impact access and affordability of future technical assistance and capacity building trainings offered online to diverse suppliers.
- Utilities anticipate impacts to their supplier diversity programs due to the coronavirus (COVID 19) pandemic, given the economic effect the pandemic is having on all businesses.

These barriers and challenges impact the growth and participation of all diverse suppliers, including those in ESJ communities. The CPUC will continue to work with the utilities to reduce barriers to supplier diversity continued progress. The CPUC will also work with the utilities to focus on ESJ communities and identify any barrier unique to such communities.

Supplier Clearinghouse Database and ESJ Communities

In their annual GO 156 reports, the utilities count only those diverse suppliers that are in the Supplier Clearinghouse database³² and use this database to find diverse suppliers. As mentioned earlier, the Supplier Clearinghouse maintains a database of certified WMDVLGBTBEs for the use of utilities and CPUC.

The Utility Supplier Diversity staff analyzed the Supplier Clearinghouse database to identify how many diverse suppliers in ESJ communities are available in the database for the utilities to engage. Of the 7,054 certified diverse suppliers with California addresses in the database, 42.2 percent (2,977 diverse suppliers) are in ESJ communities.

ESJ Communities	No. of Diverse Suppliers	Percentage of Total No. of California Addressed Diverse Suppliers
DC	1,550	21.97%
LC	2,653	37.61%
DC & LC	1,226	17.38%
Non-DC & LC	4,077	57.80%

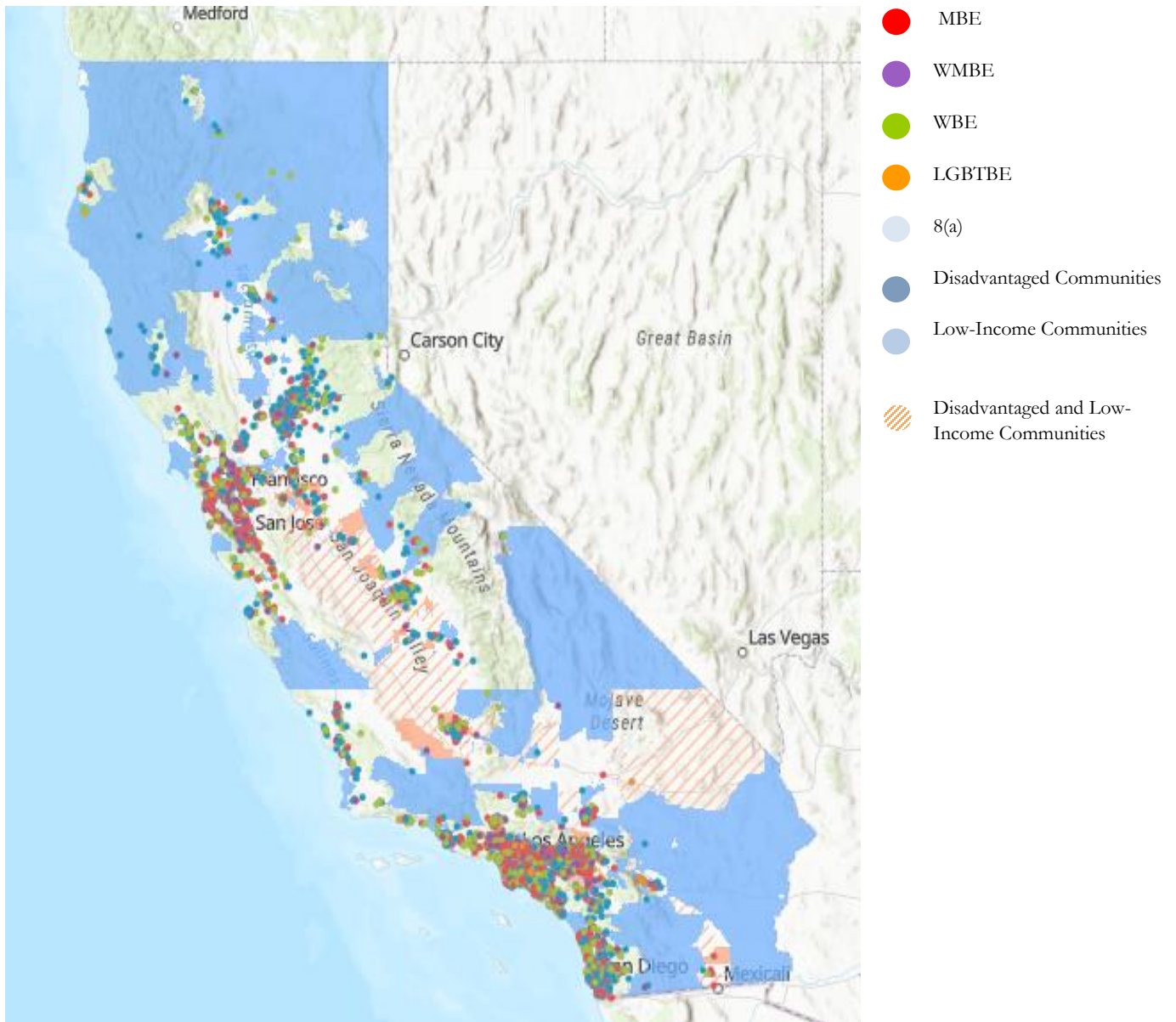
The database the utilities use to quantify their supplier diversity progress and to search for diverse suppliers represents the ESJ communities as the table above indicates, corroborating the results thus far that the Utility Supplier Diversity Program extends to ESJ communities.

However, as the map below indicates, certified diverse suppliers, similar to the utilities’ 2019 diverse spend map, are concentrated in northern (Bay and Sacramento areas) and southern (Los Angeles and San Diego

³² Since the database includes only those diverse suppliers whose diversity status has been verified by the Supplier Clearinghouse: GO 156 Sections 2 and 3.

areas) California, with a sparse representation in central California (Central Valley area). This reduces the benefits that flow from utilities' supplier diversity programs to the ESJ communities in those areas. The CPUC is working with utilities, CBOs, and business organizations to engage and drive more certification and inclusion of diverse suppliers in the Central Valley. (For an interactive view of utilities' 2019 diverse spend and certified diverse suppliers geographic distribution in ESJ communities, use the following links: [interactive map 1](#) and [interactive map 2](#).)

Supplier Clearinghouse Database in ESJ Communities Map



Conclusions

The CPUC ESJ Action Plan adopted in 2019 defines ESJ communities and guides the CPUC's ESJ efforts and commitment. The ESJ Action Plan provides goals and workplans to ensure ESJ communities' interests and concerns are considered in all sectors the CPUC regulates. One of the goals is to promote economic opportunities in ESJ communities through the CPUC's GO 156 Utility Supplier Diversity Program. For the last 30 years, the Utility Supplier Diversity Program has promoted and monitored a successful economic and social justice program that encourages utilities to procure, at a minimum, 21.5 percent of their total procurement from WMDVLGBTBEs or diverse suppliers. In 2019, the utilities procured 33.2 percent from diverse suppliers.

Based on the data and information submitted, the utilities are currently procuring from and engaging with diverse suppliers in ESJ communities. In 2019, the utilities spent 47.5 percent of their total California diverse spend with diverse suppliers located in ESJ communities. These ESJ communities spend represents spend across all GO 156 diverse categories: 44.2 percent of total MBE procurement; 78 percent of total WMBE spend; 49.3 percent of total WBE procurement; 17.1 percent of total DVBE spend; and 2.9 percent of total LGBTBE procurement. Out of 69 SIC codes with diverse spend, in 35 SIC codes, the utilities spent more than 50 percent of the share of the total SIC code spend in ESJ communities.

In 2019, Park & Apple Valley Water had the most diverse spend in ESJ communities with 83.4 percent, followed by Frontier's 71.5 percent. More than half of the utilities spent more than 40 percent of their 2019 diverse spend with diverse suppliers with addresses in ESJ communities.

In addition to contracting, in 2019, the utilities conducted and provided other supplier diversity related activities such as outreach, and technical assistance, and capacity building education programs in ESJ communities. They also engaged, collaborated, and built relationships with community-based organizations (CBOs), business organizations, trade associations, and other advocacy groups representing diverse businesses and diverse communities that represent diverse suppliers in ESJ communities as well.

The Supplier Clearinghouse database the utilities use to quantify their supplier diversity progress and search for diverse suppliers also shows the availability of diverse suppliers in ESJ communities. 42.2 percent of the certified diverse suppliers with California addresses are in ESJ communities.

The utilities have challenges implementing their supplier diversity programs, which impacts diverse suppliers, including those in ESJ communities. The ongoing COVID 19 pandemic may exacerbate those challenges or add barriers, limiting diverse suppliers' access to utility contracts and supplier diversity programs.

Recommendations

The utilities, through their supplier diversity programs, are procuring from and supporting diverse suppliers in ESJ communities. However, these efforts and benefits may not be part of a deliberate strategy to target the advancement of ESJ communities. To ensure the realization of the ESJ Action Plan's vision of economic opportunities and to further increase utility contracts in ESJ communities, concrete strategies and actions are imperative. Towards this end, the Utility Supplier Diversity staff provides the following action items it will implement:

- Encourage and work with the Utility Supplier Diversity Program participating utilities, telecommunications, cable, and other companies to expand their supplier diversity programs to include strategies and targets for ESJ communities.
- Develop metrics and reporting process to track progress, diverse spend, and supplier diversity activities in ESJ communities.
- Research supplier diversity challenges and barriers unique to ESJ communities and design solutions.
- Update the Supplier Clearinghouse database to indicate those diverse suppliers in ESJ communities.
- Identify and engage CBOs and business organizations focused on ESJ community advocacy and advancement.
- Organize business networking and educational events such as expos, webinars, panel discussions, workshops, etc., focused on ESJ communities.
- Work with ESJ community leaders to promote GO 156.
- Continue to work with the utilities to develop strategies to increase diverse spend in the Central Valley.
- Consider looking at non-diverse suppliers spend within ESJ communities.
- Conduct further research and analysis into high-dollar industry areas to understand opportunities for diverse suppliers in ESJ communities to take better advantage of contracting opportunities.

Appendices

Abbreviations:

MBE - Minority-owned Business Enterprise

WMBE - Women/Minority-owned Business Enterprise

WBE - Woman-owned Business Enterprise

DVBE - Disabled Veteran-owned Business Enterprise

LGBTBE - LGBT-owned Business Enterprise

AA - African American Business

HA - Hispanic American Business

APA - Asian/Pacific American Business

NA - Native American Business

DC - Disadvantaged Community

LC - Low-income Community

CA - California

% - Percentage

Tier I - Direct Diverse Spend

Tier II - Diverse Subcontracting Spend

Other - Diverse Status Not Specified

USDP ECONOMIC OPPORTUNITIES IN ENVIRONMENTAL AND SOCIAL JUSTICE COMMUNITIES

Attachment A															
	MBE CA Diverse Spend	WMBE CA Diverse Spend	AA CA Diverse Spend	HA CA Diverse Spend	APA CA Diverse Spend	NA CA Diverse Spend	WBE CA Diverse Spend	DVBE CA Diverse Spend	LGBTBE CA Diverse Spend	Other	DC CA Diverse Spend	LC CA Diverse Spend	DC & LC CA Diverse Spend	Non DC & LC CA Diverse Spend	Total CA Diverse Spend
Tier I															
No. of Diverse Suppliers with CA Addresses	882	196	131	533	358	56	828	132	33	1	589	797	438	1124	2072
2019 \$ Spend	\$3,440,042,930	\$887,618,957	\$451,613,711	\$1,714,130,167	\$1,823,072,307	\$338,845,702	\$1,744,951,007	\$450,005,481	\$36,401,353	\$3,172	\$2,264,107,184	\$2,736,393,385	\$1,804,496,702	\$3,363,019,033	\$6,559,022,900
% of Total CA Diverse Spend	52.45%	13.53%	6.89%	26.13%	27.79%	5.17%	26.60%	6.86%	0.55%	0.00005%	34.52%	41.72%	27.51%	51.27%	100.00%
Tier II															
No. of Diverse Suppliers with CA Addresses	622	115	63	451	182	41	570	133	9		451	586	337	749	1449
2019 \$ Spend	\$685,385,301	\$98,888,237	\$35,604,840	\$590,647,308	\$118,881,403	\$39,139,986	\$427,607,106	\$150,155,147	\$14,363,844		\$313,483,196	\$524,751,637	\$266,769,683	\$804,934,485	\$1,376,399,635
% of Total CA Diverse Spend	49.79%	7.18%	2.59%	42.91%	8.64%	2.84%	31.07%	10.91%	1.04%		22.77%	38.12%	19.38%	58.48%	100.00%
Total															
No. of Diverse Suppliers with CA Addresses	1504	311	194	984	540	97	1398	265	42	1	1040	1383	775	1873	3521
2019 \$ Spend	\$4,125,428,231	\$986,507,194	\$487,218,551	\$2,304,777,475	\$1,941,953,710	\$377,985,689	\$2,172,558,112	\$600,160,628	\$50,765,197	\$3,172	\$2,577,590,380	\$3,261,145,022	\$2,071,266,385	\$4,167,953,518	\$7,935,422,535
% of Total CA Diverse Spend	51.99%	12.43%	6.14%	29.04%	24.47%	4.76%	27.38%	7.56%	0.64%	0.00004%	32.48%	41.10%	26.10%	52.52%	100.00%

USDP ECONOMIC OPPORTUNITIES IN ENVIRONMENTAL AND SOCIAL JUSTICE COMMUNITIES

Attachment B

	Utility		MBE CA Diverse Spend	WMBE CA Diverse Spend	AA CA Diverse Spend	HA CA Diverse Spend	APA CA Diverse Spend	NA CA Diverse Spend	WBE CA Diverse Spend	DVBE CA Diverse Spend	LGBTBE CA Diverse Spend	Other	DC CA Diverse Spend	LC CA Diverse Spend	DC & LC CA Diverse Spend	Non DC & LC CA Diverse Spend	Total CA Diverse Spend
Tier I																	
1	AT&T	No. of Diverse Suppliers with CA Addresses	47	17	6	39	19	0	47	9	0		37	40	25	68	120
		2019 \$ Spend	\$40,980,440	\$21,186,491	\$1,295,285	\$40,092,658	\$20,778,989	\$0	\$30,066,920	\$13,538,291	\$0		\$45,475,144	\$43,828,226	\$38,350,402	\$54,819,174	\$105,772,142
		% of Total CA Diverse Spend	38.74%	20.03%	1.22%	37.90%	19.65%	0.00%	28.43%	12.80%	0.00%		42.99%	41.44%	36.26%	51.83%	100.00%
2	Ca-Am Water	No. of Diverse Suppliers with CA Addresses	31	11	10	22	7	3	31	6	5		16	29	14	53	84
		2019 \$ Spend	\$16,358,917	\$2,095,887	\$3,001,627	\$5,538,129	\$487,226	\$9,427,822	\$9,797,053	\$563,639	\$485,772		\$11,476,072	\$12,966,630	\$11,223,367	\$16,081,934	\$29,301,268
		% of Total CA Diverse Spend	55.83%	7.15%	10.24%	18.90%	1.66%	32.18%	33.44%	1.92%	1.66%		39.17%	44.25%	38.30%	54.88%	100.00%
3	Cal Water	No. of Diverse Suppliers with CA Addresses	45	20	3	30	28	4	47	15	2		41	41	29	76	129
		2019 \$ Spend	\$25,177,296	\$1,075,270	\$106,691	\$14,550,322	\$9,672,773	\$1,922,780	\$5,484,596	\$609,905	\$159,320		\$18,009,466	\$18,796,080	\$17,032,664	\$12,733,506	\$32,506,389
		% of Total CA Diverse Spend	77.45%	3.31%	0.33%	44.76%	29.76%	5.92%	16.87%	1.88%	0.49%		55.40%	57.82%	52.40%	39.17%	100.00%

USDP ECONOMIC OPPORTUNITIES IN ENVIRONMENTAL AND SOCIAL JUSTICE COMMUNITIES

	Utility		MBE CA Diverse Spend	WMBE CA Diverse Spend	AA CA Diverse Spend	HA CA Diverse Spend	APA CA Diverse Spend	NA CA Diverse Spend	WBE CA Diverse Spend	DVBE CA Diverse Spend	LGBTBE CA Diverse Spend	Other	DC CA Diverse Spend	LC CA Diverse Spend	DC & LC CA Diverse Spend	Non DC & LC CA Diverse Spend	Total CA Diverse Spend
4	Charter	No. of Diverse Suppliers with CA Addresses	8	0	0	5	3	0	4	0	0		2	2	2	10	12
		2019 \$ Spend	\$14,235,675	\$0	\$0	\$13,724,644	\$511,031	\$0	\$116,292	\$0	\$0		\$1,184,489	\$1,184,489	\$1,184,489	\$13,167,478	\$14,351,967
		% of Total CA Diverse Spend	99.19%	0.00%	0.00%	95.63%	3.56%	0.00%	0.81%	0.00%	0.00%		8.25%	8.25%	8.25%	91.75%	100.00%
5	Comcast	No. of Diverse Suppliers with CA Addresses	14	6	3	8	7	2	9	2	1	1	12	12	8	17	33
		2019 \$ Spend	\$7,446,640	\$1,859,881	\$1,895,642	\$2,466,435	\$3,314,741	\$1,629,703	\$1,621,228	\$427,608	\$1,650	\$3,172	\$4,219,305	\$3,080,709	\$2,151,026	\$6,211,190	\$11,360,179
		% of Total CA Diverse Spend	65.55%	16.37%	16.69%	21.71%	29.18%	14.35%	14.27%	3.76%	0.01%	0.03%	37.14%	27.12%	18.93%	54.68%	100.00%
6	Frontier	No. of Diverse Suppliers with CA Addresses	10	5	0	9	6	0	\$18	10	0		18	22	15	18	43
		2019 \$ Spend	\$12,386,202	\$9,439,633	\$0	\$21,544,819	\$281,017	\$0	\$21,075,673	\$2,425,955	\$0		\$24,401,689	\$25,904,097	\$17,886,177	\$12,907,854	\$45,327,463
		% of Total CA Diverse Spend	27.33%	20.83%	0.00%	47.53%	0.62%	0.00%	46.50%	5.35%	0.00%		53.83%	57.15%	39.46%	28.48%	100.00%
7	Golden State Water	No. of Diverse Suppliers with CA Addresses	37	3	4	22	10	4	20	3	2		25	31	19	28	65
		2019 \$ Spend	\$29,411,171	\$468,679	\$78,460	\$25,188,346	\$1,382,507	\$3,230,537	\$11,959,803	\$2,704,131	\$860,554		\$7,609,160	\$29,318,327	\$6,866,808	\$15,343,657	\$45,404,337

USDP ECONOMIC OPPORTUNITIES IN ENVIRONMENTAL AND SOCIAL JUSTICE COMMUNITIES

	Utility		MBE CA Diverse Spend	WMBE CA Diverse Spend	AA CA Diverse Spend	HA CA Diverse Spend	APA CA Diverse Spend	NA CA Diverse Spend	WBE CA Diverse Spend	DVBE CA Diverse Spend	LGBTBE CA Diverse Spend	Other	DC CA Diverse Spend	LC CA Diverse Spend	DC & LC CA Diverse Spend	Non DC & LC CA Diverse Spend	Total CA Diverse Spend
		% of Total CA Diverse Spend	64.78%	1.03%	0.17%	55.48%	3.04%	7.12%	26.34%	5.96%	1.90%		16.76%	64.57%	15.12%	33.79%	100.00%
8	Liberty Utilities	No. of Diverse Suppliers with CA Addresses	8	0	2	4	2	0	13	4	0		3	9	2	15	25
		2019 \$ Spend	\$4,400,114	\$0	\$162,702	\$3,733,135	\$504,278	\$0	\$492,453	\$1,107,308	\$0		\$59,579	\$297,547	\$1,550	\$5,644,298	\$5,999,875
		% of Total CA Diverse Spend	73.34%	0.00%	2.71%	62.22%	8.40%	0.00%	8.21%	18.46%	0.00%		0.99%	4.96%	0.03%	94.07%	100.00%
9	PacifiCorp	No. of Diverse Suppliers with CA Addresses	4	0	1	3	0	0	0	0	0		2	3	2	1	4
		2019 \$ Spend	\$6,362,079	\$0	\$409	\$6,361,671	\$0	\$0	\$0	\$0	\$0		\$103,906	\$265,014	\$103,906	\$6,097,066	\$6,362,079
		% of Total CA Diverse Spend	100.00%	0.00%	0.01%	99.99%	0.00%	0.00%	0.00%	0.00%	0.00%		1.63%	4.17%	1.63%	95.83%	100.00%
10	Park & Apple Valley Water	No. of Diverse Suppliers with CA Addresses	16	6	2	15	5	0	11	3	1		19	21	15	12	37
		2019 \$ Spend	\$2,279,275	\$134,064	\$18,265	\$1,746,459	\$648,616	\$0	\$5,587,704	\$11,122	\$774,360		\$1,712,660	\$7,179,541	\$1,597,150	\$1,491,474	\$8,786,526
		% of Total CA Diverse Spend	25.94%	1.53%	0.21%	19.88%	7.38%	0.00%	63.59%	0.13%	8.81%		19.49%	81.71%	18.18%	16.97%	100.00%
11	PG&E	No. of Diverse Suppliers with CA Addresses	97	45	11	56	62	13	147	21	7		66	122	53	182	317

USDP ECONOMIC OPPORTUNITIES IN ENVIRONMENTAL AND SOCIAL JUSTICE COMMUNITIES

	Utility		MBE CA Diverse Spend	WMBE CA Diverse Spend	AA CA Diverse Spend	HA CA Diverse Spend	APA CA Diverse Spend	NA CA Diverse Spend	WBE CA Diverse Spend	DVBE CA Diverse Spend	LGBTBE CA Diverse Spend	Other	DC CA Diverse Spend	LC CA Diverse Spend	DC & LC CA Diverse Spend	Non DC & LC CA Diverse Spend	Total CA Diverse Spend
		2019 \$ Spend	\$847,829,806	\$609,671,409	\$196,882,217	\$639,432,706	\$511,731,039	\$109,455,253	\$559,816,747	\$246,356,277	\$4,040,682		\$504,399,117	\$1,130,815,266	\$482,554,243	\$1,115,054,781	\$2,267,714,922
		% of Total CA Diverse Spend	37.39%	26.88%	8.68%	28.20%	22.57%	4.83%	24.69%	10.86%	0.18%		22.24%	49.87%	21.28%	49.17%	100.00%
12	SDG&E	No. of Diverse Suppliers with CA Addresses	140	0	21	70	42	7	122	17	5		53	94	34	171	284
		2019 \$ Spend	\$234,836,283	\$0	\$14,527,232	\$143,830,013	\$33,130,701	\$43,348,337	\$112,913,349	\$45,734,146	\$5,623,806		\$82,326,278	\$83,854,288	\$41,354,087	\$274,281,105	\$399,107,584
		% of Total CA Diverse Spend	58.84%	0.00%	3.64%	36.04%	8.30%	10.86%	28.29%	11.46%	1.41%		20.63%	21.01%	10.36%	68.72%	100.00%
13	San Gabriel Valley Water	No. of Diverse Suppliers with CA Addresses	45	4	6	28	13	2	16	7	1		42	40	29	20	73
		2019 \$ Spend	\$10,124,463	\$212,333	\$883,880	\$4,311,462	\$3,977,360	\$1,164,094	\$13,292,644	\$161,767	\$1,660,589		\$6,952,242	\$7,661,732	\$5,492,180	\$16,330,002	\$25,451,796
		% of Total CA Diverse Spend	39.78%	0.83%	3.47%	16.94%	15.63%	4.57%	52.23%	0.64%	6.52%		27.32%	30.10%	21.58%	64.16%	100.00%
14	San Jose Water	No. of Diverse Suppliers with CA Addresses	17	0	2	8	6	1	11	1	1		3	9	3	21	30
		2019 \$ Spend	\$3,629,967	\$0	\$31,825	\$1,413,997	\$1,512,660	\$671,486	\$718,847	\$19,000	\$1,931		\$1,000,010	\$1,156,956	\$1,000,010	\$3,212,789	\$4,369,745
		% of Total CA Diverse Spend	83.07%	0.00%	0.73%	32.36%	34.62%	15.37%	16.45%	0.43%	0.04%		22.88%	26.48%	22.88%	73.52%	100.00%

USDP ECONOMIC OPPORTUNITIES IN ENVIRONMENTAL AND SOCIAL JUSTICE COMMUNITIES

	Utility		MBE CA Diverse Spend	WMBE CA Diverse Spend	AA CA Diverse Spend	HA CA Diverse Spend	APA CA Diverse Spend	NA CA Diverse Spend	WBE CA Diverse Spend	DVBE CA Diverse Spend	LGBTBE CA Diverse Spend	Other	DC CA Diverse Spend	LC CA Diverse Spend	DC & LC CA Diverse Spend	Non DC & LC CA Diverse Spend	Total CA Diverse Spend
15	SCE	No. of Diverse Suppliers with CA Addresses	124	54	19	89	60	10	150	14	3		101	132	74	186	345
		2019 \$ Spend	\$614,042,073	\$205,834,479	\$77,431,227	\$545,655,059	\$75,019,877	\$121,770,389	\$634,018,191	\$62,066,472	\$264,141		\$754,774,045	\$576,575,322	\$459,028,731	\$643,904,721	\$1,516,225,357
		% of Total CA Diverse Spend	40.50%	13.58%	5.11%	35.99%	4.95%	8.03%	41.82%	4.09%	0.02%		49.78%	38.03%	30.27%	42.47%	100.00%
16	SoCalGas	No. of Diverse Suppliers with CA Addresses	164	0	27	86	43	8	116	10	1		97	120	72	146	291
		2019 \$ Spend	\$313,875,766	0	\$15,672,984	\$209,680,677	\$55,911,329	\$32,610,777	\$170,172,863	\$38,831,084	\$82		\$238,292,474	\$207,977,878	\$164,341,019	\$240,950,462	\$522,879,795
		% of Total CA Diverse Spend	60.03%	0.00%	3.00%	40.10%	10.69%	6.24%	32.55%	7.43%	0.00002%		45.57%	39.78%	31.43%	46.08%	100.00%
17	Southwest Gas	No. of Diverse Suppliers with CA Addresses	4	3	1	3	2	1	11	1	0		3	8	3	11	19
		2019 \$ Spend	\$7,286,525	\$1,811,312	\$5,892,520	\$1,582,857	\$1,450,336	\$172,125	\$669,391	\$30,810,325	\$0		\$1,634,537	\$2,256,162	\$1,634,537	\$38,321,391	\$40,577,553
		% of Total CA Diverse Spend	17.96%	4.46%	14.52%	3.90%	3.57%	0.42%	1.65%	75.93%	0.00%		4.03%	5.56%	4.03%	94.44%	100.00%
18	Sprint	No. of Diverse Suppliers with CA Addresses	20	5	7	6	11	1	11	1	0		11	12	8	22	37
		2019 \$ Spend	\$586,543,825	\$18,730,114	\$129,169,132	\$5,043,155	\$457,619,252	\$13,442,400	\$16,318,698	\$24,659	\$0		\$354,347,653	\$376,572,158	\$353,685,650	\$244,383,135	\$621,617,296

USDP ECONOMIC OPPORTUNITIES IN ENVIRONMENTAL AND SOCIAL JUSTICE COMMUNITIES

	Utility		MBE CA Diverse Spend	WMBE CA Diverse Spend	AA CA Diverse Spend	HA CA Diverse Spend	APA CA Diverse Spend	NA CA Diverse Spend	WBE CA Diverse Spend	DVBE CA Diverse Spend	LGBTBE CA Diverse Spend	Other	DC CA Diverse Spend	LC CA Diverse Spend	DC & LC CA Diverse Spend	Non DC & LC CA Diverse Spend	Total CA Diverse Spend
		% of Total CA Diverse Spend	94.36%	3.01%	20.78%	0.81%	73.62%	2.16%	2.63%	0.004%	0.00%		57.00%	60.58%	56.90%	39.31%	100.00%
19	Suburban Water	No. of Diverse Suppliers with CA Addresses	20	6	2	18	6	0	10	3	1		20	22	16	14	40
		2019 \$ Spend	\$6,042,955	\$1,398,803	\$20,780	\$6,718,467	\$702,511	\$0	\$698,538	\$1,185,337	\$3,439,839		\$5,444,729	\$5,578,482	\$4,857,466	\$6,599,726	\$12,765,471
		% of Total CA Diverse Spend	47.34%	10.96%	0.16%	52.63%	5.50%	0.00%	5.47%	9.29%	26.95%		42.65%	43.70%	38.05%	51.70%	100.00%
20	T-Mobile	No. of Diverse Suppliers with CA Addresses	16	3	2	4	13	0	8	1	1		4	7	4	22	29
		2019 \$ Spend	\$320,310,441	\$1,057,096	\$2,384,932	\$7,066,705	\$311,915,900	\$0	\$49,214,586	\$652,693	\$19,062,425		\$44,581,283	\$49,161,698	\$44,581,283	\$341,135,542	\$390,297,241
		% of Total CA Diverse Spend	82.07%	0.27%	0.61%	1.81%	79.92%	0.00%	12.61%	0.17%	4.88%		11.42%	12.60%	11.42%	87.40%	100.00%
21	Trans Bay Cable	No. of Diverse Suppliers with CA Addresses	0	0	0	0	0	0	6	0	0		2	5	2	1	6
		2019 \$ Spend	\$0	\$0	\$0	\$0	\$0	\$0	\$123,686	\$0	\$0		\$54,044	\$85,303	\$54,044	\$38,383	\$123,686
		% of Total CA Diverse Spend	0.00%	0.00%	0.00%	0.00%	0.00%	0.00%	100.00%	0.00%	0.00%		43.69%	68.97%	43.69%	31.03%	100.00%
22	TPx	No. of Diverse Suppliers with CA Addresses	1	1	0.00%	1	1	0	5	0	2		2	4	2	5	9

USDP ECONOMIC OPPORTUNITIES IN ENVIRONMENTAL AND SOCIAL JUSTICE COMMUNITIES

	Utility		MBE CA Diverse Spend	WMBE CA Diverse Spend	AA CA Diverse Spend	HA CA Diverse Spend	APA CA Diverse Spend	NA CA Diverse Spend	WBE CA Diverse Spend	DVBE CA Diverse Spend	LGBTBE CA Diverse Spend	Other	DC CA Diverse Spend	LC CA Diverse Spend	DC & LC CA Diverse Spend	Non DC & LC CA Diverse Spend	Total CA Diverse Spend
		2019 \$ Spend	\$735	\$2,771	\$0	\$2,771	\$735	\$0	\$134,496	\$0	\$26,200		\$59,876	\$73,684	\$59,876	\$90,517	\$164,202
		% of Total CA Diverse Spend	0.45%	1.69%	0.00%	1.69%	0.45%	0.00%	81.91%	0.00%	15.96%		36.47%	44.87%	36.47%	55.13%	100.00%
23	Verizon	No. of Diverse Suppliers with CA Addresses	12	7	2	6	11	0	12	4	0		9	9	6	23	35
		2019 \$ Spend	\$336,249,155	\$12,640,736	\$2,157,904	\$14,275,106	\$332,456,881	\$0	\$100,590,987	\$2,775,762	\$0		\$155,988,851	\$151,737,532	\$149,455,463	\$293,985,720	\$452,256,641
		% of Total CA Diverse Spend	74.35%	2.80%	0.48%	3.16%	73.51%	0.00%	22.24%	0.61%	0.00%		34.49%	33.55%	33.05%	65.00%	100.00%
24	Wild Goose Storage	No. of Diverse Suppliers with CA Addresses	2	0	0	1	1	0	3	0	0		1	3	1	2	5
		2019 \$ Spend	\$233,127	\$0	\$0	\$170,578	\$62,549	\$0	\$66,260	\$0	\$0		\$574	\$66,260	\$574	\$233,127	\$299,387
		% of Total CA Diverse Spend	77.87%	0.00%	0.00%	56.98%	20.89%	0.00%	22.13%	0.00%	0.00%		0.19%	22.13%	0.19%	77.87%	100.00%
	Total Tier I	No. of Diverse Suppliers with CA Addresses	882	196	131	533	358	56	828	132	33	1	589	797	438	1124	2072
		2019 \$ Spend	\$3,440,042,930	\$887,618,957	\$451,613,711	\$1,714,130,167	\$1,823,072,307	\$338,845,702	\$1,744,951,007	\$450,005,481	\$36,401,353	\$3,172	\$2,264,107,184	\$2,736,393,385	\$1,804,496,702	\$3,363,019,033	\$6,559,022,900
		% of Total CA Diverse Spend	52.45%	13.53%	6.89%	26.13%	27.79%	5.17%	26.60%	6.86%	0.55%	0.00005%	34.52%	41.72%	27.51%	51.27%	100.00%

USDP ECONOMIC OPPORTUNITIES IN ENVIRONMENTAL AND SOCIAL JUSTICE COMMUNITIES

	Utility		MBE CA Diverse Spend	WMBE CA Diverse Spend	AA CA Diverse Spend	HA CA Diverse Spend	APA CA Diverse Spend	NA CA Diverse Spend	WBE CA Diverse Spend	DVBE CA Diverse Spend	LGBTBE CA Diverse Spend	Other	DC CA Diverse Spend	LC CA Diverse Spend	DC & LC CA Diverse Spend	Non DC & LC CA Diverse Spend	Total CA Diverse Spend
Tier II																	
	Utility		MBE CA Diverse Spend	WMBE CA Diverse Spend	AA CA Diverse Spend	HA CA Diverse Spend	APA CA Diverse Spend	NA CA Diverse Spend	WBE CA Diverse Spend	DVBE CA Diverse Spend	LGBTBE CA Diverse Spend	Other	DC CA Diverse Spend	LC CA Diverse Spend	DC & LC CA Diverse Spend	Non DC & LC CA Diverse Spend	Total CA Diverse Spend
1	Ca-Am Water	No. of Diverse Suppliers with CA Addresses	10	2	2	8	2	0	15	4	0		10	13	7	15	31
		2019 \$ Spend	\$268,024	\$37,681	\$75,235	\$210,945	\$19,525	\$0	\$742,363	\$1,957,269	\$0		\$191,725	\$613,847	\$183,218	\$2,382,982	\$3,005,336
		% of Total CA Diverse Spend	8.92%	1.25%	2.50%	7.02%	0.65%	0.00%	24.70%	65.13%	0.00%		6.38%	20.43%	6.10%	79.29%	100.00%
2	Cal Water	No. of Diverse Suppliers with CA Addresses	20	5	0	18	6	1	19	6	0		14	14	10	32	50
		2019 \$ Spend	\$7,421,665	\$182,618	\$0	\$6,268,098	\$1,283,730	\$52,455	\$4,489,755	\$669,355	\$0		\$4,909,894	\$5,397,780	\$4,640,363	\$7,096,082	\$12,763,393
		% of Total CA Diverse Spend	58.15%	1.43%	0.00%	49.11%	10.06%	0.41%	35.18%	5.24%	0.00%		38.47%	42.29%	36.36%	55.60%	100.00%
3	Charter	No. of Diverse Suppliers with CA Addresses	4	0	0	1	3	0	2	3	0		3	4	3	5	9
		2019 \$ Spend	\$669,500	\$0	\$0	\$389,476	\$280,024	\$0	\$185,380	\$876,086	\$0		\$643,973	\$1,172,936	\$643,973	\$558,030	\$1,730,966
		% of Total CA Diverse Spend	38.68%	0.00%	0.00%	22.50%	16.18%	0.00%	10.71%	50.61%	0.00%		37.20%	67.76%	37.20%	32.24%	100.00%

USDP ECONOMIC OPPORTUNITIES IN ENVIRONMENTAL AND SOCIAL JUSTICE COMMUNITIES

	Utility		MBE CA Diverse Spend	WMBE CA Diverse Spend	AA CA Diverse Spend	HA CA Diverse Spend	APA CA Diverse Spend	NA CA Diverse Spend	WBE CA Diverse Spend	DVBE CA Diverse Spend	LGBTBE CA Diverse Spend	Other	DC CA Diverse Spend	LC CA Diverse Spend	DC & LC CA Diverse Spend	Non DC & LC CA Diverse Spend	Total CA Diverse Spend
4	Comcast	No. of Diverse Suppliers with CA Addresses	12	3	1	7	5	2	8	1	0		10	11	6	9	24
		2019 \$ Spend	\$6,398,355	\$641,677	\$179,650	\$6,169,720	\$665,132	\$25,530	\$4,310,923	\$328,473	\$0		\$3,132,540	\$2,117,976	\$1,541,680	\$7,970,592	\$11,679,429
		% of Total CA Diverse Spend	54.78%	5.49%	1.54%	52.83%	5.69%	0.22%	36.91%	2.81%	0.00%		26.82%	18.13%	13.20%	68.24%	100.00%
5	Golden State Water	No. of Diverse Suppliers with CA Addresses	1	0	0	1	0	0	4	2	0		5	3	2	1	7
		2019 \$ Spend	\$35,526	\$0	\$0	\$35,526	\$0	\$0	\$60,050	\$387,076	\$0		\$112,478	\$419,486	\$58,239	\$8,927	\$482,652
		% of Total CA Diverse Spend	7.36%	0.00%	0.00%	7.36%	0.00%	0.00%	12.44%	80.20%	0.00%		23.30%	86.91%	12.07%	1.85%	100.00%
6	Park & Apple Valley Water	No. of Diverse Suppliers with CA Addresses	2	1	0	3	0	0	6	1	0		6	6	5	3	10
		2019 \$ Spend	\$68,007	\$182,816	\$0	\$250,823	\$0	\$0	\$231,519	\$6,807	\$0		\$340,425	\$436,681	\$333,618	\$45,661	\$489,149
		% of Total CA Diverse Spend	13.90%	37.37%	0.00%	51.28%	0.00%	0.00%	47.33%	1.39%	0.00%		69.60%	89.27%	68.20%	9.33%	100.00%
7	PG&E	No. of Diverse Suppliers with CA Addresses	139	45	19	99	52	14	178	28	4		107	179	82	190	394
		2019 \$ Spend	\$296,562,200	\$32,470,287	\$11,001,071	\$275,791,112	\$17,268,378	\$24,971,926	\$187,737,273	\$53,052,959	\$13,381,016		\$93,922,396	\$235,277,278	\$84,519,717	\$338,523,778	\$583,203,735

USDP ECONOMIC OPPORTUNITIES IN ENVIRONMENTAL AND SOCIAL JUSTICE COMMUNITIES

	Utility		MBE CA Diverse Spend	WMBE CA Diverse Spend	AA CA Diverse Spend	HA CA Diverse Spend	APA CA Diverse Spend	NA CA Diverse Spend	WBE CA Diverse Spend	DVBE CA Diverse Spend	LGBTBE CA Diverse Spend	Other	DC CA Diverse Spend	LC CA Diverse Spend	DC & LC CA Diverse Spend	Non DC & LC CA Diverse Spend	Total CA Diverse Spend
		% of Total CA Diverse Spend	50.85%	5.57%	1.89%	47.29%	2.96%	4.28%	32.19%	9.10%	2.29%		16.10%	40.34%	14.49%	58.05%	100.00%
8	SDG&E	No. of Diverse Suppliers with CA Addresses	124	0	13	76	29	6	97	26	1		57	86	44	149	248
		2019 \$ Spend	\$77,586,538	\$0	\$7,756,644	\$56,753,252	\$7,824,927	\$5,251,715	\$59,880,425	\$27,284,102	\$471,516		\$26,356,477	\$41,167,170	\$22,563,013	\$120,261,948	\$165,222,580
		% of Total CA Diverse Spend	46.96%	0.00%	4.69%	34.35%	4.74%	3.18%	36.24%	16.51%	0.29%		15.95%	24.92%	13.66%	72.79%	100.00%
9	San Gabriel Valley Water	No. of Diverse Suppliers with CA Addresses	7	0	1	6	0	0	3	0	0		5	5	4	4	10
		2019 \$ Spend	\$222,307	\$0	\$135,020	\$87,287	\$0	\$0	\$15,241	\$0	\$0		\$64,222	\$195,050	\$60,030	\$38,306	\$237,548
		% of Total CA Diverse Spend	93.58%	0.00%	56.84%	36.74%	0.00%	0.00%	6.42%	0.00%	0.00%		27.04%	82.11%	25.27%	16.13%	100.00%
10	San Jose Water	No. of Diverse Suppliers with CA Addresses	15	0	1	8	5	1	12	3	1		8	8	6	21	31
		2019 \$ Spend	\$783,703	\$0	\$184	\$476,579	\$287,439	\$19,501	\$3,466,053	\$4,368,120	\$3,199		\$237,619	\$670,859	\$212,036	\$7,924,633	\$8,621,075
		% of Total CA Diverse Spend	9.09%	0.00%	0.00%	5.53%	3.33%	0.23%	40.20%	50.67%	0.04%		2.76%	7.78%	2.46%	91.92%	100.00%
11	SCE	No. of Diverse Suppliers with CA Addresses	103	54	6	97	43	11	112	31	2		101	119	74	156	302

USDP ECONOMIC OPPORTUNITIES IN ENVIRONMENTAL AND SOCIAL JUSTICE COMMUNITIES

	Utility		MBE CA Diverse Spend	WMBE CA Diverse Spend	AA CA Diverse Spend	HA CA Diverse Spend	APA CA Diverse Spend	NA CA Diverse Spend	WBE CA Diverse Spend	DVBE CA Diverse Spend	LGBTBE CA Diverse Spend	Other	DC CA Diverse Spend	LC CA Diverse Spend	DC & LC CA Diverse Spend	Non DC & LC CA Diverse Spend	Total CA Diverse Spend
		2019 \$ Spend	\$172,724,017	\$45,517,042	\$281,568	\$176,634,097	\$35,455,538	\$5,869,856	\$127,724,616	\$38,809,695	\$491,459		\$95,522,966	\$152,768,568	\$85,100,135	\$222,075,431	\$385,266,830
		% of Total CA Diverse Spend	44.83%	11.81%	0.07%	45.85%	9.20%	1.52%	33.15%	10.07%	0.13%		24.79%	39.65%	22.09%	57.64%	100.00%
12	SoCalGas	No. of Diverse Suppliers with CA Addresses	154	0	17	105	26	6	86	20	1		94	107	70	130	261
		2019 \$ Spend	\$84,828,203	\$0	\$13,956,684	\$61,786,738	\$6,135,779	\$2,949,004	\$33,305,944	\$20,089,983	\$16,654		\$52,161,179	\$46,123,136	\$31,762,596	\$71,719,067	\$138,240,785
		% of Total CA Diverse Spend	61.36%	0.00%	10.10%	44.70%	4.44%	2.13%	24.09%	14.53%	0.01205%		37.73%	33.36%	22.98%	51.88%	100.00%
13	Southwest Gas	No. of Diverse Suppliers with CA Addresses	1	2	1	2	0	0	4	0	0		5	4	4	2	7
		2019 \$ Spend	\$580,535	\$9,162	\$4,165	\$585,532	\$0	\$0	\$658,698	\$0	\$0		\$1,239,658	\$1,108,565	\$1,108,565	\$8,737	\$1,248,394
		% of Total CA Diverse Spend	46.50%	0.73%	0.33%	46.90%	0.00%	0.00%	52.76%	0.00%	0.00%		99.30%	88.80%	88.80%	0.70%	100.00%
14	Suburban Water	No. of Diverse Suppliers with CA Addresses	2	0	0	1	1	0	3	2	0		3	3	3	4	7
		2019 \$ Spend	\$615,086	\$0	\$0	\$15,086	\$600,000	\$0	\$74,446	\$112,977	\$0		\$670,610	\$670,610	\$670,610	\$131,899	\$802,509
		% of Total CA Diverse Spend	76.65%	0.00%	0.00%	1.88%	74.77%	0.00%	9.28%	14.08%	0.00%		83.56%	83.56%	83.56%	16.44%	100.00%

USDP ECONOMIC OPPORTUNITIES IN ENVIRONMENTAL AND SOCIAL JUSTICE COMMUNITIES

	Utility		MBE CA Diverse Spend	WMBE CA Diverse Spend	AA CA Diverse Spend	HA CA Diverse Spend	APA CA Diverse Spend	NA CA Diverse Spend	WBE CA Diverse Spend	DVBE CA Diverse Spend	LGBTBE CA Diverse Spend	Other	DC CA Diverse Spend	LC CA Diverse Spend	DC & LC CA Diverse Spend	Non DC & LC CA Diverse Spend	Total CA Diverse Spend
15	Trans Bay Cable	No. of Diverse Suppliers with CA Addresses	0	1	0	0	1	0	1	0	0		1	1	1	1	2
		2019 \$ Spend	\$0	\$9,728	\$0	\$0	\$9,728	\$0	\$167,530	\$0	\$0		\$9,728	\$9,728	\$9,728	\$167,530	\$177,258
		% of Total CA Diverse Spend	0.00%	5.49%	0.00%	0.00%	5.49%	0.00%	94.51%	0.00%	0.00%		5.49%	5.49%	5.49%	94.51%	100.00%
16	Verizon	No. of Diverse Suppliers with CA Addresses	28	2	2	19	9	0	20	6	0		22	23	16	27	56
		2019 \$ Spend	\$36,621,635	\$19,837,226	\$2,214,619	\$5,193,038	\$49,051,204	\$0	\$4,556,891	\$2,212,243	\$0		\$33,967,307	\$36,601,968	\$33,362,163	\$26,020,882	\$63,227,995
		% of Total CA Diverse Spend	57.92%	31.37%	3.50%	8.21%	77.58%	0.00%	7.21%	3.50%	0.00%		53.72%	57.89%	52.76%	41.15%	100.00%
	Total Tier II	No. of Diverse Suppliers with CA Addresses	622	115	63	451	182	41	570	133	9		451	586	337	749	1449
		2019 \$ Spend	\$685,385,301	\$98,888,237	\$35,604,840	\$590,647,308	\$118,881,403	\$39,139,986	\$427,607,106	\$150,155,147	\$14,363,844		\$313,483,196	\$524,751,637	\$266,769,683	\$804,934,485	\$1,376,399,635
		% of Total CA Diverse Spend	49.80%	7.18%	2.59%	42.91%	8.64%	2.84%	31.07%	10.91%	1.04%		22.78%	38.12%	19.38%	58.48%	100.00%

USDP ECONOMIC OPPORTUNITIES IN ENVIRONMENTAL
AND SOCIAL JUSTICE COMMUNITIES

Attachment C				
Diverse Category	No. of Diverse Suppliers with CA Addresses	2019 CA Diverse Spend	Percentage of Diverse Category Spend	Percentage of Total CA Diverse Spend
MBE	1504	\$4,125,428,231	100.00%	51.99%
MBE & AA	163	\$389,705,982	9.45%	4.91%
MBE & HA	839	\$1,956,409,721	47.42%	24.65%
MBE & APA	421	\$1,450,705,890	35.16%	18.28%
MBE & NA	81	\$328,606,638	7.97%	4.14%
MBE & DC	517	\$1,540,273,486	37.34%	19.41%
MBE & DC & AA	30	\$9,548,349	0.23%	0.12%
MBE & DC & HA	344	\$689,056,476	16.70%	8.68%
MBE & DC & APA	114	\$569,754,079	13.81%	7.18%
MBE & DC & NA	29	\$271,914,581	6.59%	3.43%
MBE & LC	590	\$1,503,873,843	36.45%	18.95%
MBE & LC & AA	59	\$20,152,435	0.49%	0.25%
MBE & LC & HA	364	\$723,133,022	17.53%	9.11%
MBE & LC & APA	128	\$623,226,172	15.11%	7.85%
MBE & LC & NA	39	\$137,362,214	3.33%	1.73%
MBE & DC & LC	381	\$1,220,713,088	29.59%	15.38%
MBE & DC&LC & AA	22	\$4,408,153	0.11%	0.06%
MBE & DC&LC & HA	251	\$529,943,991	12.85%	6.68%
MBE & DC&LC & APA	91	\$565,728,220	13.71%	7.13%
MBE & DC&LC & NA	17	\$120,632,723	2.92%	1.52%
MBE & Non DC&LC	778	\$2,301,993,990	55.80%	29.01%
MBE & Non DC&LC & AA	96	\$364,413,350	8.83%	4.59%
MBE & Non DC&LC & HA	382	\$1,074,164,214	26.04%	13.54%
MBE & Non DC&LC & APA	270	\$823,453,859	19.96%	10.38%
MBE & Non DC&LC & NA	30	\$39,962,566	0.97%	0.50%
WMBE	311	\$986,507,194	100.00%	12.43%

USDP ECONOMIC OPPORTUNITIES IN ENVIRONMENTAL
AND SOCIAL JUSTICE COMMUNITIES

WMBE & AA	31	\$97,512,570	9.88%	1.23%
WMBE & HA	145	\$348,367,754	35.31%	4.39%
WMBE & APA	119	\$491,247,820	49.80%	6.19%
WMBE & NA	16	\$49,379,051	5.01%	0.62%
WMBE & DC	102	\$313,021,285	31.73%	3.94%
WMBE & DC & AA	11	\$7,048,715	0.71%	0.09%
WMBE & DC & HA	58	\$291,898,771	29.59%	3.68%
WMBE & DC & APA	32	\$14,047,686	1.42%	0.18%
WMBE & DC & NA	1	\$26,113	0.00%	0.00%
WMBE & LC	122	\$764,185,444	77.46%	9.63%
WMBE & LC & AA	12	\$9,150,682	0.93%	0.12%
WMBE & LC & HA	61	\$300,305,853	30.44%	3.78%
WMBE & LC & APA	41	\$428,150,204	43.40%	5.40%
WMBE & LC & NA	8	\$26,578,705	2.69%	0.33%
WMBE & DC&LC	76	\$308,119,123	31.23%	3.88%
WMBE & DC&LC & AA	10	\$6,940,987	0.70%	0.09%
WMBE & DC&LC & HA	41	\$290,574,697	29.45%	3.66%
WMBE & DC&LC & APA	24	\$10,577,326	1.07%	0.13%
WMBE & DC&LC & NA	1	\$26,113	0.00%	0.00%
WMBE & Non DC&LC	163	\$217,419,589	22.04%	2.74%
WMBE & Non DC&LC & AA	18	\$88,254,160	8.95%	1.11%
WMBE & Non DC&LC & HA	67	\$46,737,827	4.74%	0.59%
WMBE & Non DC&LC & APA	70	\$59,627,256	6.04%	0.75%
WMBE & Non DC&LC & NA	8	\$22,800,346	2.31%	0.29%
WBE	1398	\$2,172,558,112	100.00%	27.38%
WBE & DC	360	\$636,479,941	29.30%	8.02%
WBE & LC	575	\$912,167,028	41.99%	11.49%
WBE & DC&LC	267	\$477,679,068	21.99%	6.02%
WBE & Non DC&LC	730	\$1,101,590,211	50.70%	13.88%
DVBE	265	\$600,160,628	100.00%	7.56%

USDP ECONOMIC OPPORTUNITIES IN ENVIRONMENTAL
AND SOCIAL JUSTICE COMMUNITIES

DVBE & DC	57	\$87,369,755	14.56%	1.10%
DVBE & LC	83	\$79,450,575	13.24%	1.00%
DVBE & DC&LC	47	\$64,309,193	10.72%	0.81%
DVBE & Non DC&LC	172	\$497,649,490	82.92%	6.27%
LGBTBE	42	\$50,765,197	100.00%	0.64%
LGBTBE & DC	3	\$442,741	0.87%	0.01%
LGBTBE & LC	12	\$1,464,960	2.89%	0.02%
LGBTBE & DC&LC	3	\$442,741	0.87%	0.01%
LGBTBE & Non DC&LC	30	\$49,300,238	97.11%	0.62%
Total 2019 CA Diverse Spend	3521	\$7,935,422,535		100.00%

USDP ECONOMIC OPPORTUNITIES IN ENVIRONMENTAL
AND SOCIAL JUSTICE COMMUNITIES

Attachment D				
SIC Code	SIC Code Description	Diverse Suppliers with CA Addresses	2019 CA Diverse Spend	2019 Spend in ESJ Communities
No SIC		38	\$78,605,221	24.39%
SIC 01	Agricultural Production Crops	1	\$410,195	100.00%
SIC 07	Agricultural Services	64	\$550,664,067	50.54%
SIC 08	Forestry	4	\$5,758,542	89.75%
SIC 10	Metal Mining	5	\$234,386	3.62%
SIC 12	Coal Mining	3	\$1,669,739	2.43%
SIC 13	Oil and Gas Extraction	6	\$14,820,436	45.27%
SIC 14	Mining and Quarrying of Nonmetallic Minerals, Except Fuels	9	\$2,110,829	19.75%
SIC 15	Building Construction General Contractors and Operative Builders	138	\$335,130,699	44.91%
SIC 16	Heavy Construction Other Than Building Construction Contractors	211	\$933,192,129	50.49%
SIC 17	Construction Special Trade Contractors	377	\$664,051,894	63.78%
SIC 20	Food and Kindred Products	3	\$290,990	38.46%
SIC 22	Textile Mill Products	1	\$1,850	100.00%
SIC 23	Apparel and Other Finished Products Made from Fabrics and Similar Materials	8	\$4,196,596	2.58%
SIC 24	Lumber and Wood Products, Except Furniture	1	\$971,255	0.00%
SIC 25	Furniture and Fixtures	9	\$5,390,935	4.85%
SIC 26	Paper and Allied Products	11	\$1,545,802	85.72%
SIC 27	Printing, Publishing, and Allied Industries	32	\$16,974,680	10.57%
SIC 28	Chemicals and Allied Products	6	\$6,786,244	3.86%
SIC 29	Petroleum Refining and Related Industries	3	\$485,860	0.00%
SIC 30	Rubber and Miscellaneous Plastics Products	7	\$6,072,034	2.73%

USDP ECONOMIC OPPORTUNITIES IN ENVIRONMENTAL
AND SOCIAL JUSTICE COMMUNITIES

SIC 32	Stone, Clay, Glass, and Concrete Products	9	\$1,633,140	10.94%
SIC 33	Primary Metal Industries	8	\$16,787,156	0.68%
SIC 34	Fabricated Metal Products, Except Machinery and Transportation Equipment	42	\$24,522,027	50.69%
SIC 35	Industrial and Commercial Machinery and Computer Equipment	44	\$58,225,965	73.62%
SIC 36	Electronic and Other Electrical Equipment and Components, Except Computer Equipment	70	\$73,753,691	80.83%
SIC 37	Transportation Equipment	28	\$16,630,061	56.47%
SIC 38	Measuring, Analyzing, And Controlling Instruments; Photographic, Medical and Optical Goods; Watches and Clocks	27	\$46,032,885	1.79%
SIC 39	Miscellaneous Manufacturing Industries	10	\$8,234,134	98.34%
SIC 41	Local and Suburban Transit and Interurban Highway Passenger Transportation	1	\$44	100.00%
SIC 42	Motor Freight Transportation and Warehousing	83	\$85,749,172	50.70%
SIC 44	Water Transportation	1	\$976,434	100.00%
SIC 45	Transportation by Air	6	\$19,763,046	22.60%
SIC 46	Pipelines, Except Natural Gas	4	\$3,866,356	30.04%
SIC 47	Transportation Services	14	\$372,696,948	99.01%
SIC 48	Communications	11	\$226,069,012	12.06%
SIC 49	Electric, Gas, And Sanitary Services	24	\$47,820,115	23.72%
SIC 50	Wholesale Trade-durable Goods	175	\$429,167,677	40.59%
SIC 51	Wholesale Trade-non-durable Goods	64	\$71,752,130	90.89%
SIC 52	Building Materials, Hardware, Garden Supply, And Mobile Home Dealers	12	\$5,633,979	80.53%
SIC 53	General Merchandise Stores	2	\$510,680	100.00%
SIC 54	Food Stores	2	\$24,334	100.00%
SIC 55	Automotive Dealers and Gasoline Service Stations	33	\$13,250,626	77.56%

USDP ECONOMIC OPPORTUNITIES IN ENVIRONMENTAL
AND SOCIAL JUSTICE COMMUNITIES

SIC 57	Home Furniture, Furnishings, and Equipment Stores	2	\$1,264,771	0.00%
SIC 58	Eating and Drinking Places	18	\$2,596,250	17.16%
SIC 59	Miscellaneous Retail	28	\$1,261,948	58.95%
SIC 61	Non-depository Credit Institutions	2	\$8,390,940	0.00%
SIC 62	Security and Commodity Brokers, Dealers, Exchanges, And Services	3	\$535,938	20.00%
SIC 63	Insurance Carriers	1	\$5,751	100.00%
SIC 64	Insurance Agents, Brokers, And Service	3	\$653,055	100.00%
SIC 65	Real Estate	10	\$14,864,055	57.58%
SIC 67	Holding and Other Investment Offices	1	\$6,731	100.00%
SIC 70	Hotels, Rooming Houses, Camps, And Other Lodging Places	1	\$184,921	100.00%
SIC 72	Personal Services	7	\$6,884,589	90.63%
SIC 73	Business Services	513	\$648,704,423	25.35%
SIC 75	Automotive Repair, Services, And Parking	26	\$4,565,015	90.33%
SIC 76	Miscellaneous Repair Services	17	\$3,960,602	97.07%
SIC 78	Motion Pictures	1	\$1,650	0.00%
SIC 79	Amusement and Recreation Services	1	\$225,119	0.00%
SIC 80	Health Services	10	\$20,123,635	96.39%
SIC 81	Legal Services	66	\$16,723,833	41.13%
SIC 82	Educational Services	4	\$395,346	0.00%
SIC 83	Social Services	5	\$1,229,859	96.14%
SIC 87	Engineering, Accounting, Research, Management, and Related Services	689	\$833,042,007	24.62%
SIC 88	Private Households	1	\$1,208,502	0.00%
SIC 89	Miscellaneous Services	111	\$566,551,926	59.05%
SIC 92	Justice, Public Order, And Safety	2	\$43,830	100.00%

USDP ECONOMIC OPPORTUNITIES IN ENVIRONMENTAL
AND SOCIAL JUSTICE COMMUNITIES

SIC 94	Administration of Human Resource Programs	2	\$281,515	0.00%
SIC 95	Administration of Environmental Quality and Housing Programs	6	\$1,109,213	81.98%
SIC 96	Administration of Economic Programs	10	\$14,537,590	23.29%
Total 2019 CA Diverse Spend		3147	\$6,301,817,008	47.04%

Attachment E	
Organization/Associations/Advocacy Groups Utilities Supported	
MBE	
1	Mountain Plains Minority Supplier Chamber of Commerce
2	National Association for the Advancement of Color People
3	National Association of Minority Contractors
4	National Association of Minority Contractors - Southern California
5	National Minority Supplier Development Council
6	Northwest Mountain Minority Supplier Development Council
7	Pacific Southwest Minority Supplier Development Council
8	Southern California Minority Supplier Development Council
9	University of Washington - MBE Program
10	Western Regional Minority Supplier Development Council
African American	
1	American Association of Blacks in Energy
2	Black Business Association
3	Black Business Association - Los Angeles
4	Black Chamber of Commerce - Orange County
5	California Black Chamber of Commerce
6	Central San Diego Black Chamber of Commerce (CSDBCC)
7	Fresno Metro Black Chamber of Commerce
8	Greater Los Angeles African American Chamber of Commerce
9	Heartland Black Chamber of Commerce
10	Recycling Black Dollars
11	Riverside Black Chamber of Commerce
12	San Fernando Valley Black Chamber of Commerce
13	Silicon Valley Black Chamber of Commerce
14	Southern California Black Chamber of Commerce

15	U.S. Black Chamber of Commerce
16	Young Black Contractors Association
Hispanic American	
1	California Hispanic Chambers of Commerce
2	Greater Riverside Hispanic Chamber of Commerce
3	Hispanic Chamber of Commerce of Greater Kansas City
4	Latin Business Association
5	Latina Global Executive Leadership Institute
6	Latino Business Action Network
7	Los Angeles Latino Chamber of Commerce
8	National Latina Business Women Association - Inland Empire
9	National Latina Business Women Association - Los Angeles
10	Orange County Hispanic Chamber of Commerce
11	The Latino Coalition
12	Tulare-Kings Hispanic Chamber of Commerce
13	U.S. Hispanic Chamber of Commerce
Asian/Pacific American	
1	Asian Business Association
2	Asian Business Association - Los Angeles
3	Asian Business Association - Orange County
4	Asian Chamber of Commerce
5	Asian/ Pacific Islander Chamber of Commerce and Entrepreneurship
6	California Asian-Pacific Chamber of Commerce
7	Chinese American Construction Professionals
8	Los Angeles Asian Business Association
9	National Asian American Coalition
10	Pacific Asian Consortium in Employment
11	Sacramento Asian Pacific Chamber of Commerce

12	U.S. Pan Asian American Chamber of Commerce
Native American	
1	American Indian Chamber of Commerce
2	Fresno Native American and Business Development Center
3	National Center of American Indian Economic Development
4	National Center for American Indian Enterprise Development
WBE	
1	Central Exchange (WBEs)
2	Multicultural Women Executive Leadership Foundation
3	National Association of Women Business Owners (NAWBO)
4	National Association of Women Business Owners Inland Empire (NAWBO-IE)
5	National Association of Women Business Owners Los Angeles (NAWBO-LA)
6	National Association of Women Business Owners San Diego (NAWBO-SD)
7	WEConnect International
8	Women's Business Development Center (Affiliate of WBENC)
9	Women's Business Enterprise Council Pacific
10	Women's Business Enterprise Council West
11	Women's Business Enterprise Council West Woman of Color
12	Women's Business Enterprise National Council
13	Women Impacting Public Policy
DVBE	
1	CalVet Central
2	Elite Service-Disabled Veteran Owned Business Network
3	National Veteran Business Development Council
4	National Veteran-Owned Business Association
5	Northern California Elite Disabled Veteran Business Enterprise
6	U.S. Veteran Business Alliance
7	Veterans Business Outreach Center

8	Veterans Business Roundtable
9	Veterans In Business (VIB) Network
10	Veterans In Energy
LGBTBE	
1	Colorado LGBTQ Chamber of Commerce
2	Desert Business Association
3	Golden Gate Business Association
4	Long Beach Gay and Lesbian Chamber of Commerce (LBGLCC)
5	Long Beach Lesbian Gay Pride, Inc.
6	Los Angeles LGBTBQ Chamber of Commerce
7	Mid-America Gay and Lesbian Chamber of Commerce
8	National LGBT Chamber of Commerce
9	Rainbow Chamber of Commerce Silicon Valley
10	Sacramento Rainbow Chamber of Commerce
11	Western Business Alliance (WBA)
Small and Diverse Businesses	
1	California Capital PTAC
2	California Small Business Association
3	Council for Supplier Diversity
4	Diversity & Inclusion (D&I)
5	Diversity Professional
6	Industry Council for Small Business Development (ICSBD)
7	Leadership Council on Legal Diversity
8	National Association of Minority & Women Owned Legal Firms
9	National Diversity Coalition
10	National Diversity Council
11	National Utilities Diversity Council
12	NorCal PTAC

13	U.S. Small Business Administration
14	National Business Inclusion Consortium
Others	
1	Billion Dollar Roundtable
2	Butte Valley Chamber of Commerce
3	California Water Association
4	Covina Chamber of Commerce
5	Crescent City Del Norte County Chamber of Commerce
6	Disability Inclusion
7	Economic Development Corporation (EDC)
8	Edison Electric Institute
9	Electric Utility Industry Sustainable Supply Chain Alliance
10	Greater Seattle Business Association
11	Greater West Covina Business Association
12	GreenBiz
13	Greenlining Institute
14	Impact Southern California
15	Jefferson Economic Development Institute
16	La Mirada Chamber of Commerce
17	Langston Bar Association
18	Los Angeles Area Chamber of Commerce
19	Los Angeles Business Council
20	Mount Shasta Chamber of Commerce
21	National Association of Regulatory Utility Commissioners
22	Regional San Gabriel Valley Chamber of Commerce
23	Siskiyou County Economic
24	Sustainable Purchasing Leadership Council
25	Utility Supply Management Alliance

USDP ECONOMIC OPPORTUNITIES IN ENVIRONMENTAL
AND SOCIAL JUSTICE COMMUNITIES

26	Tech:SCALE (Supply Chain Access, Leadership and Equity) Industry Group
27	Weed Chamber of Commerce
28	Whittier Chamber of Commerce
29	Wright Community Development
30	Yreka Chamber of Commerce

Standard Industrial Classification (SIC) Codes Description

SIC 01: Agricultural Production Crops

SIC 02: Agriculture Production Livestock and Animal Specialties

SIC 07: Agricultural Services

SIC 08: Forestry

SIC 09: Fishing, Hunting, And Trapping

SIC 10: Metal Mining

SIC 12: Coal Mining

SIC 13: Oil and Gas Extraction

SIC 14: Mining and Quarrying of Nonmetallic Minerals, Except Fuels

SIC 15: Building Construction General Contractors and Operative Builders

SIC 16: Heavy Construction Other Than Building Construction Contractors

SIC 17: Construction Special Trade Contractors

SIC 20: Food and Kindred Products

SIC 21: Tobacco Products

SIC 22: Textile Mill Products

SIC 23: Apparel and Other Finished Products Made from Fabrics and Similar Materials

SIC 24: Lumber and Wood Products, Except Furniture

SIC 25: Furniture and Fixtures

SIC 26: Paper and Allied Products

SIC 27: Printing, Publishing, and Allied Industries

SIC 28: Chemicals and Allied Products

SIC 29: Petroleum Refining and Related Industries

SIC 30: Rubber and Miscellaneous Plastics Products

SIC 31: Leather and Leather Products

SIC 32: Stone, Clay, Glass, and Concrete Products

SIC 33: Primary Metal Industries

SIC 34: Fabricated Metal Products, Except Machinery and Transportation Equipment

SIC 35: Industrial and Commercial Machinery and Computer Equipment

SIC 36: Electronic and Other Electrical Equipment and Components, Except Computer Equipment

SIC 37: Transportation Equipment

SIC 38: Measuring, Analyzing, And Controlling Instruments; Photographic, Medical and Optical Goods; Watches and Clocks

SIC 39: Miscellaneous Manufacturing Industries

SIC 40: Railroad Transportation

SIC 41: Local and Suburban Transit and Interurban Highway Passenger Transportation

SIC 42: Motor Freight Transportation and Warehousing

SIC 43: United States Postal Service

SIC 44: Water Transportation

SIC 45: Transportation by Air

SIC 46: Pipelines, Except Natural Gas

SIC 47: Transportation Services

SIC 48: Communications

SIC 49: Electric, Gas, And Sanitary Services

SIC 50: Wholesale Trade-durable Goods

SIC 51: Wholesale Trade-non-durable Goods

SIC 52: Building Materials, Hardware, Garden Supply, And Mobile Home Dealers

SIC 53: General Merchandise Stores

SIC 54: Food Stores

SIC 55: Automotive Dealers and Gasoline Service Stations

SIC 56: Apparel and Accessory Stores

SIC 57: Home Furniture, Furnishings, and Equipment Stores

SIC 58: Eating and Drinking Places

SIC 59: Miscellaneous Retail

SIC 60: Depository Institutions

SIC 61: Non-depository Credit Institutions

SIC 62: Security and Commodity Brokers, Dealers, Exchanges, And Services

SIC 63: Insurance Carriers

SIC 64: Insurance Agents, Brokers, And Service

SIC 65: Real Estate

SIC 67: Holding and Other Investment Offices

SIC 70: Hotels, Rooming Houses, Camps, And Other Lodging Places

SIC 72: Personal Services

SIC 73: Business Services

SIC 75: Automotive Repair, Services, And Parking

SIC 76: Miscellaneous Repair Services

SIC 78: Motion Pictures

SIC 79: Amusement and Recreation Services

SIC 80: Health Services

SIC 81: Legal Services

SIC 82: Educational Services

SIC 83: Social Services

SIC 84: Museums, Art Galleries, And Botanical and Zoological Gardens

SIC 86: Membership Organizations

SIC 87: Engineering, Accounting, Research, Management, and Related Services

SIC 88: Private Households

SIC 89: Miscellaneous Services

SIC 91: Executive, Legislative, And General Government, Except Finance

SIC 92: Justice, Public Order, And Safety

SIC 93: Public Finance, Taxation, And Monetary Policy

SIC 94: Administration of Human Resource Programs

SIC 95: Administration of Environmental Quality and Housing Programs

SIC 96: Administration of Economic Programs

SIC 97: National Security and International Affairs

SIC 99: Non-classifiable Establishments