



WIRELIN RESILIENCY

SERVICE QUALITY & ETC

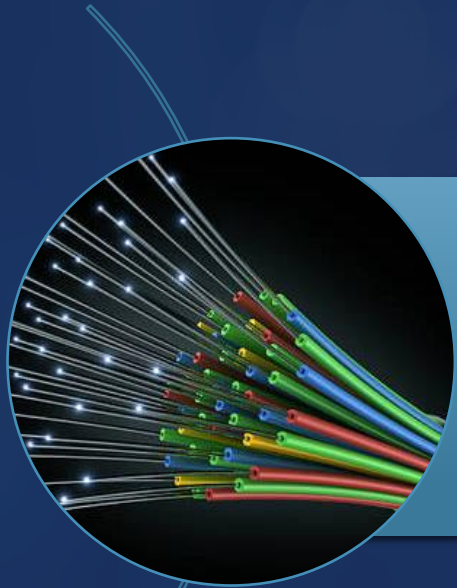
April 7, 2022



Wireline Resiliency

DECISION 21-02-029 – WIRELINE COMMUNICATIONS CARRIERS

AGENDA



Wireline Resiliency Analysis



RUN A POLL



SUMMARY

- Decision (D.) 21-02-029, Ordering Paragraph 1 (OP1): The California Public Utilities Commission (CPUC) required each facilities-based Wireline carrier to annually file a Communications Resiliency Plan starting 6 months from the effective date of the decision.
- (D.) 21-02-029, Ordering Paragraph 5 (OP 5): Each Facilities-based wireline carrier must also annually file an information-only Emergency Operations Plan, starting within 60 days of the effective date of the decision.
- The annual Resiliency Plan is next due on August 18, 2022, and the Emergency Operations Plan is next due by April 19, 2022.
- The Commission's Communication Division has updated templates for carriers to use in complying with OP1 and OP5

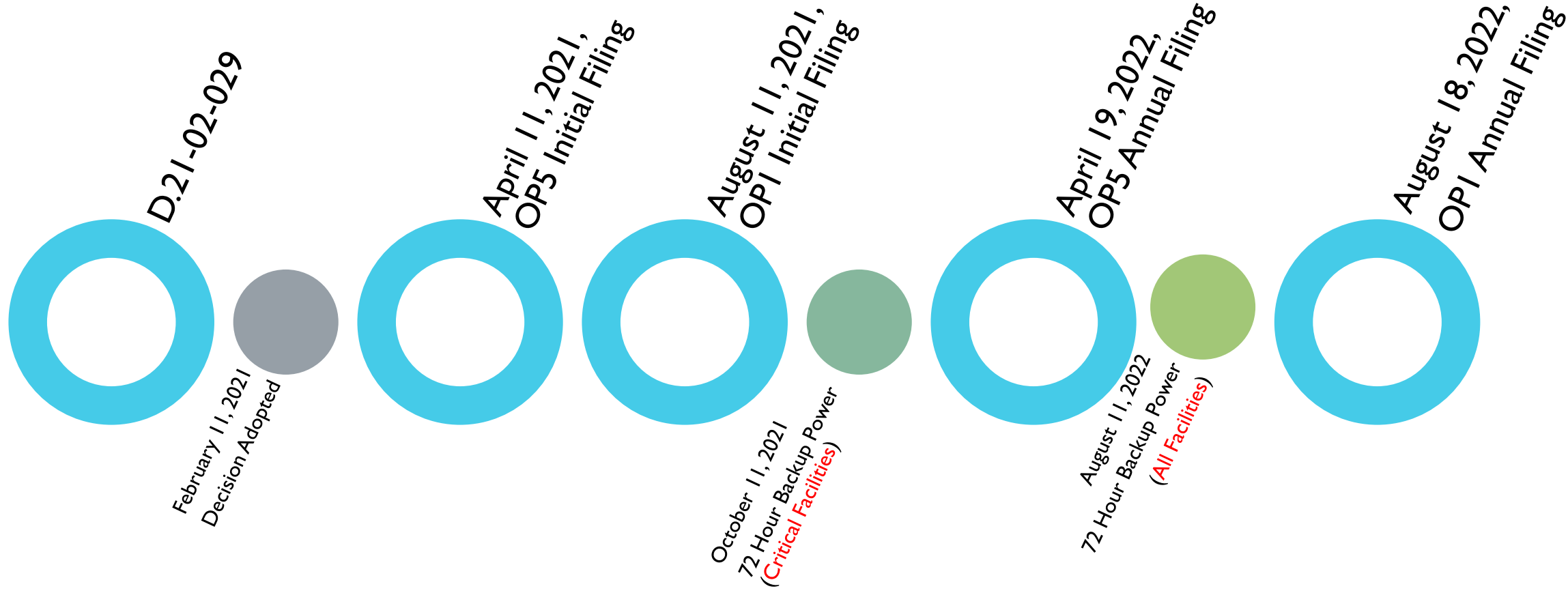
RESILIENCY STRATEGIES

- D. 21-02-029 adopted six groups of resiliency strategies
- Innovative approaches to always provide
 - Access to 911 and 211 services
 - Ability to receive emergency alerts and notifications
 - Access to basic Internet browsing
 - 72 hours of backup power during power outages

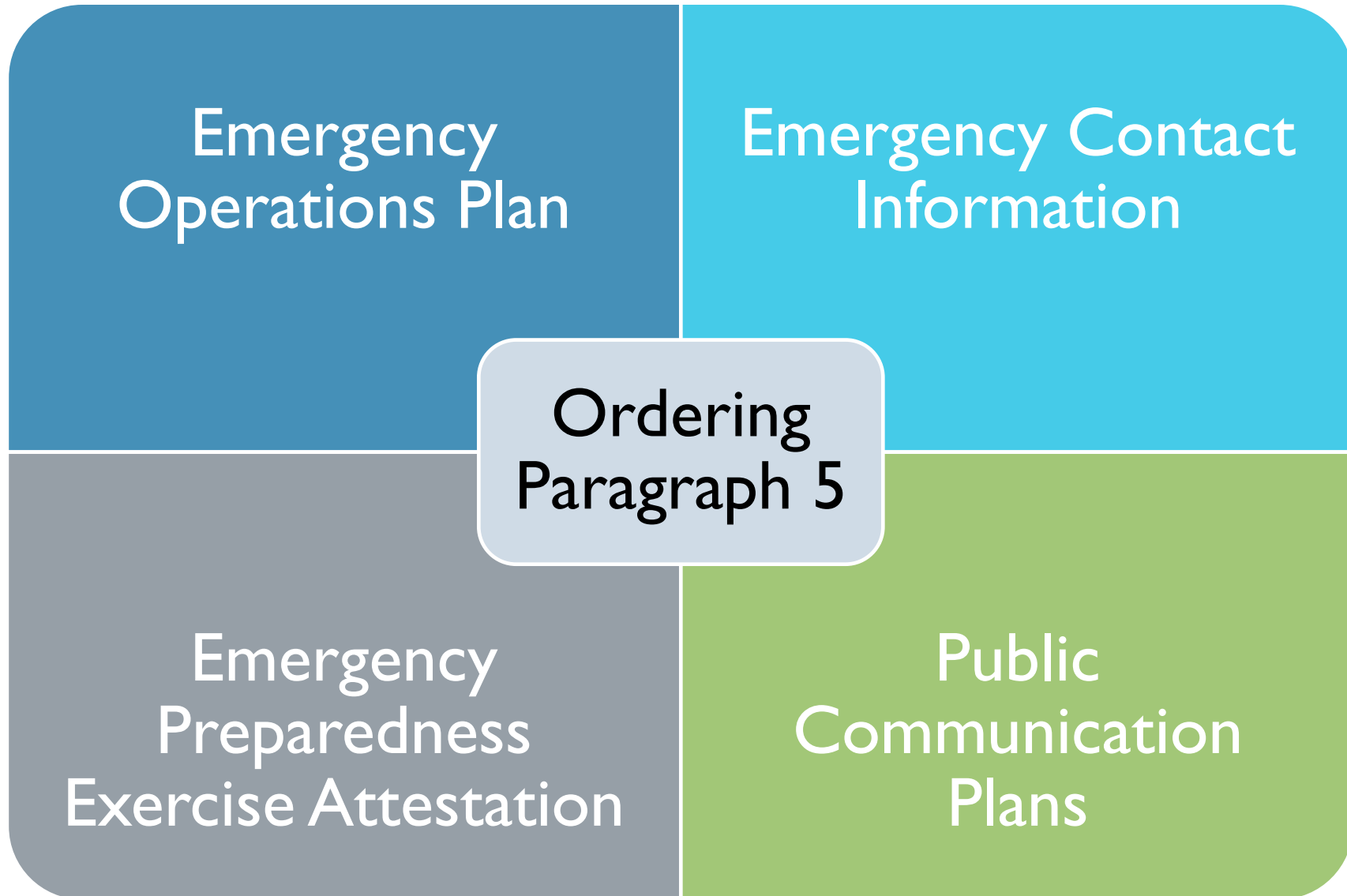
Tier 2 & Tier 3 High Fire Threat Districts



IMPLEMENTATION TIMELINE

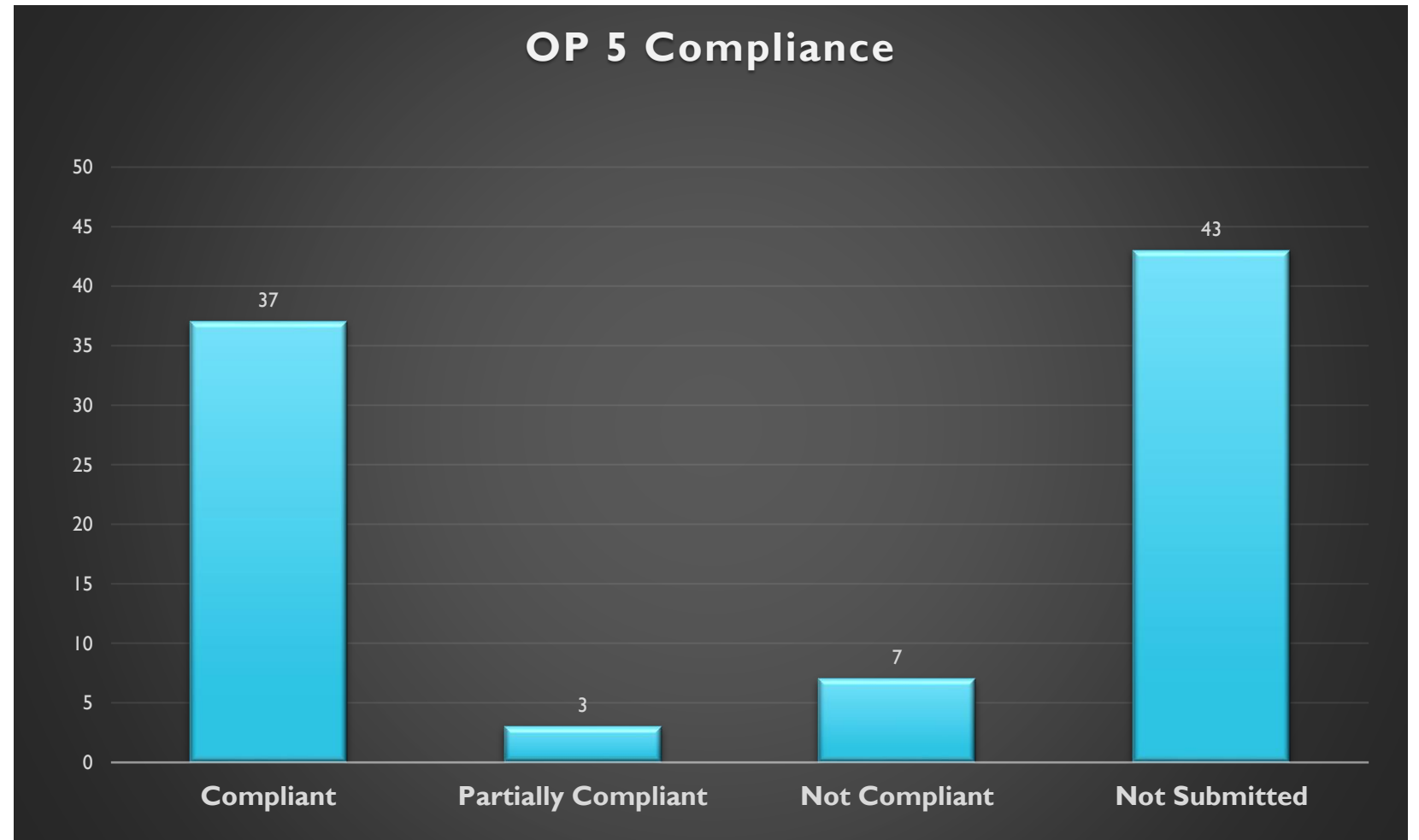


Pursuant to D.21-02-029, the CPUC ordered wireline carriers to submit information-only filings to the Commission's Communications Division Director, Cal OES, and local emergency response agencies, including:



OP 5 COMPLIANCE STATUS

- 37 Carriers are compliant
- 3 Carriers are Partially compliant
- 7 Carriers are non-compliant
- 43 Carriers did not submit plans



OPI COMPLIANCE STATUS – RESILIENCY PLAN

Power Backup

- 77% facilities have at least 1 hour but less than 72 hours Backup Power
- 14% of facilities have no back-up power
- 9% of facilities exceed 72 hours backup power

Transport Diversity

- 91% of facilities have no transport diversity

Equipment Diversity

- 85% of facilities have no equipment diversity

CHECKLIST ANALYSIS

- Carriers must provide a detailed justification for each Checklist item in the updated plan templates

YES	Item Description	Requirement
<input checked="" type="checkbox"/>	1. Discussion of the ability to maintain a sufficient level of service to maintain access to 9-1-1 and 2-1-1, maintain the ability to receive emergency notifications and maintain access to internet browsing for emergency notices immediately following the event of a disaster or power outage, including identifying how they maintain the resiliency of their networks, as defined in Section 5.2 of this decision.	Provide details as an attached document (s) to support this item, specifically include details on backup power sources that are new, deployed and temporary.
<input checked="" type="checkbox"/>	2. Detailed PSPS and grid outage response plans.	Provide detailed Public Safety Power Shutoff and Grid Outage response plan as an attached document (s).
<input checked="" type="checkbox"/>	3. Facilities with and without battery backup, fixed generation, and portable generator hookups, their location, and the estimated length of time the facilities will operate during a grid outage with and without refueling at each site.	Provide details as an attached document (s) to support this item.
<input checked="" type="checkbox"/>	4. The number of mobile generators and refueling trucks, specifying which are stationed in California: i) Number of mobile generators stationed in California: <u> 1 </u> ii) Number of refueling trucks stationed in California: <u> 0 </u>	Provide details as an attached document (s) to support this item.
<input checked="" type="checkbox"/>	5. Identify the ability to replace damaged facilities, including logical and physical network route diversity and temporary facilities (e.g., temporary microwave backhaul).	Provide details as an attached document (s) to support this item.
<input checked="" type="checkbox"/>	6. Identify titles of management and number of personnel dedicated to refueling and vendors including company and contract agreement.	Provide details as an attached document (s) to support this item along with the contract agreement copies.
<input checked="" type="checkbox"/>	7. Identify the ability to support reporting on system outages as required by Commission rules, Cal OES regulations, and California Government Code.	Provide details as an attached document (s) to support this item.
<input checked="" type="checkbox"/>	8. Detail how backup generators comply with California Air Resource Boards standards.	Provide details as an attached document (s) to support this statement. Include all owned or leased generators brought in from out-of-state.
<input checked="" type="checkbox"/>	9. Provide refueling schedules.	Provide details as an attached document (s) to support this item. Include detailed description of how service will be
<input checked="" type="checkbox"/>	10. Provide cooperative agreements which are used to pool resources with other providers.	Provide details as an attached document (s) to support this item along with the cooperative (coop) / colocation (colo) service agreement copies.
<input checked="" type="checkbox"/>	11. Identify facilities that do not need backup power, are unable to support backup power due to a safety risk, or that is objectively impossible or infeasible to deploy backup power pursuant to Section 5.7.2., and identify the basis for that determination as well as discuss actions being taken by the wireline provider to mitigate service loss resulting from the lack of backup power at those locations.	Provide details as an attached document (s) to support this item. Include detailed description of how service will be maintained for facilities that do not require backup power and why these facilities are unnecessary to do so.
<input checked="" type="checkbox"/>	12. Identify investment plans to improve network resiliency pursuant to Section 5.7.2. of D.21-02-029 (e.g., deployment of redundant backhaul, deployment of fixed generators, etc.) and how these investments are prioritized for facilities most at risk (e.g., facilities impacted by past PSPS events, past outages, overall customer impact, etc.).	Provide details as an attached document (s) to support this item.
<input checked="" type="checkbox"/>	13. Identify network facilities that support critical facilities pursuant to Section 5.4.4 as well as communities without sufficient wireless coverage pursuant to Section 5.6.2.	Provide details as an attached document(s) to support this item.
<input checked="" type="checkbox"/>	14. Provide additional information relevant to the company's current and planned response to emergencies and power outages in California.	Provide details as an attached document(s) to support this item.

QUICK FRIENDLY REMINDER...

- Wireline carriers must comply with OP1 and OP5 of the Decision D.21-02-029 annually.
- The next filing for Communications Resiliency Plans per OP1 is August 18, 2022.
- The next filing for Emergency Operations Plans per OP5 is April 19, 2022.
- Use the updated version of Resiliency and Operations Plan templates.
- Carriers must comply with the resiliency requirements, including a 72-hour backup power, as well as equipment and transport redundancies
- Register with Process Office for prompt notification of Commission decisions and mandates.

WHERE TO FIND THE DOCUMENTS?

-
- Follow the following steps to locate OP5 and OPI templates
 - Click the Network Resiliency link [Communications Network Resiliency](#)
 - Go to the bottom of the Page “Other Sources of Information”
 - Select 1st bullet point for OP5
 - Select second bullet point for OPI
 - You may find several other important sources of information at this site



THANK YOU

QUESTIONS EMAIL TO:

VIJAY.SINHA@CPUC.CA.GOV

&

SERVICERESILIENCY@CPUC.CA.GOV