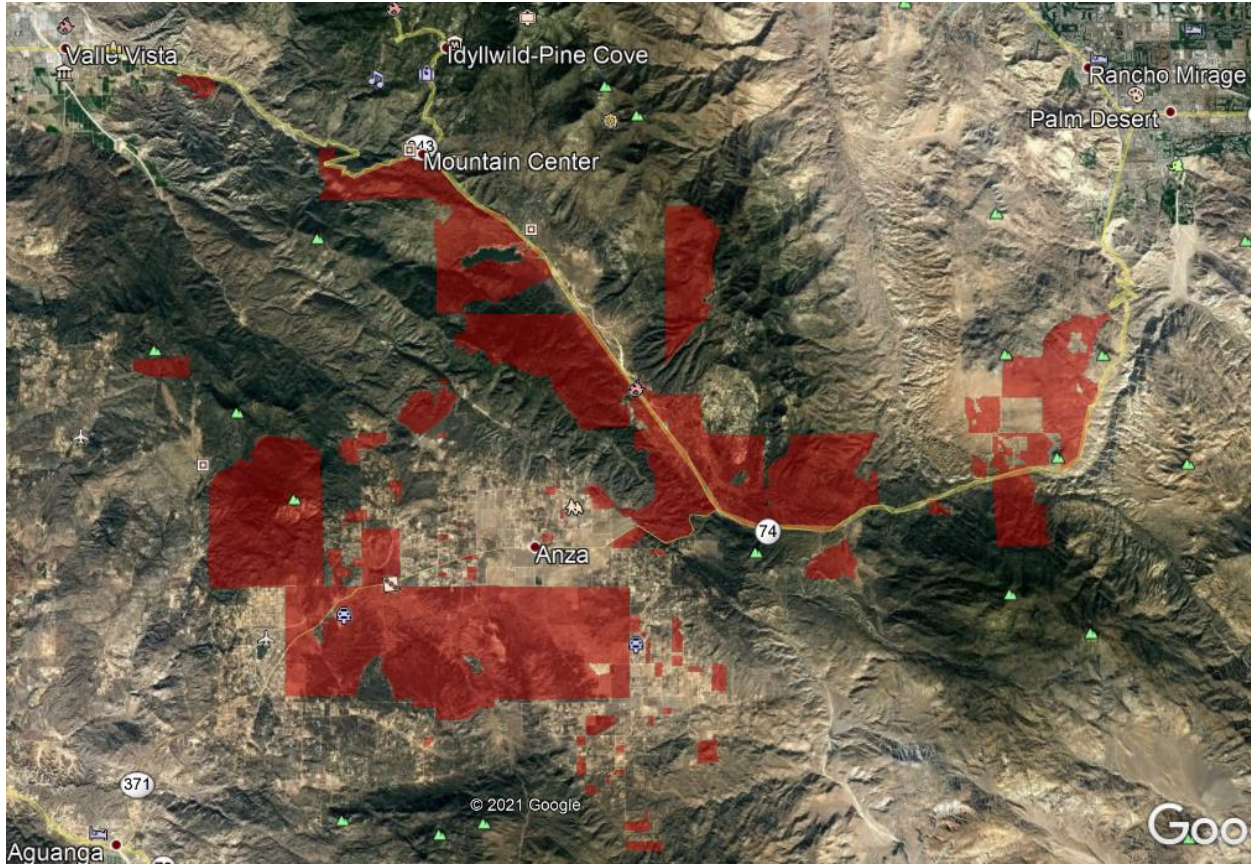


<b>6.1</b>	<b>Applicant Name</b>	<b>Anza Electric Cooperative, Inc.</b>		
<b>6.2</b>	<b>CPCN / U-Number  or WIR or  application  number of pending  CPCN/WIR</b>	<b>U7297C</b>		
<b>6.3</b>	<b>Contact Person /  Email</b>	<b>Kevin Short / kevins@anzaelectric.org</b>		
<b>6.4</b>	<b>Project Title</b>	<b>ConnectAnza</b>		
<b>6.5</b>	<b>Named project  location(s)  (Community /  County)</b>	<b>Anza / Riverside County</b>		
<b>6.6</b>	<b>Funding amount  being requested</b>	<b>\$205,125.60</b>		



Census 2010 Full FIPS Code

RDOF\_Eligible\_Locations\_est

60650444022001	14
60650444022010	29
60650444022012	12
60650444022018	9
60650444022021	8
60650444022023	3
60650444022025	3
60650444022026	47
60650444022050	2
60650444022056	8
60650444022060	2
60650444022065	2
60650444022068	3
60650444022069	4
60650444022088	9
60650444022089	11
60650444022090	18
60650444022095	3

60650444022096	7
60650444022100	5
60650444022101	13
60650444022102	8
60650444022103	6
60650444022105	6
60650444022106	5
60650444022111	2
60650444022113	3
60650444022117	17
60650444022119	5
60650444022120	17
60650444022121	3
60650444022122	44
60650444022123	7
60650444022129	3
60650444022131	11
60650444022132	23
60650444022134	13
60650444022136	3
60650444022137	2
60650444022141	4
60650444022148	8
60650444022149	14
60650444022150	2
60650444022151	3
60650444022152	5
60650444022153	32
60650444023000	5
60650444023003	2
60650444023004	1
60650444023005	4
60650444023008	1
60650444023011	2
60650444023014	1
60650444023019	2
60650444023024	1
60650444023026	1
60650444023041	1
60650444023047	4
60650444023059	2
60650444023068	2
60650444023069	1

60650444023070	3
60650444023072	4
60650444023073	1
60650444023075	1
60650444023077	1
60650444023081	2
60650444023084	6
60650444023085	1
60650444023086	1
60650444023089	5
60650444023090	7
60650444023091	2
60650444023095	2
60650444023100	2
60650444023101	3
60650444024002	2
60650444024004	20
60650444024005	2
60650444024009	2
60650444024010	5
60650444024012	3
60650444024014	17
60650444024015	19
60650444024016	15
60650444024017	6
60650444024019	5
60650444024020	11
60650444024021	9
60650444024022	4
60650444024023	10
60650444024026	5
60650444024027	11
60650444024031	6
60650444024033	3
60650444024042	3
60650444024046	8
60650444024047	10
60650444024050	4
60650444024051	7
60650444024052	5
60650444024053	5
60650444024054	8
60650444024055	6

60650444024056	3
60650444024057	8
60650444024058	5
60650444024059	6
60650444024060	3
60650444024061	9
60650444024062	9
60650444024063	25
60650444024064	4
60650444024065	9
60650444024066	3
60650444024067	2
60650444024068	3
60650444024069	17
60650444024070	13
60650444024071	14
60650444024073	5
60650444024074	16
60650444024076	2
60650444024084	2
60650444024085	18
60650444024086	2
60650444024089	4
60650444024090	10
60650444024091	5
60650444024092	4
60650444024094	5
60650444024095	8
60650444024096	8
60650444024101	12
60650444024103	14
60650444024108	2
60650444024111	2
60650444024112	2
60650444024114	9
60650444024115	7
60650444024116	7
60650444024117	10
60650444024118	6
60650444024119	4
60650444032000	5
60650444032001	11
60650444032004	9

60650444032005	3
60650444032007	13
60650444032010	4
60650444032013	2
60650444032014	3
60650444032015	2
60650444032016	1
60650444032017	2
60650444032021	7
60650444032024	2
60650444032029	10
60650444032030	2
60650444032033	4
60650444032035	12
60650444032038	2
60650444032041	2
60650444032047	2
60650444032052	8
60650444032054	3
60650444032056	2
60650444032075	9
60650444032076	2
60650444032077	2
60650444032078	2
60650444032079	2
60650444032083	4
60650444032084	2
60650444032085	4
60650444033009	3
60650444033029	2
60650444033030	2
60650444033033	1
60650444033034	2
60650444033038	5
60650444033046	2
60650444033047	6
60650444033048	2
60650444033051	4
60650444033071	2
60650444033073	6
60650444033075	9
60650444033078	10
60650444033079	12

60650444033080	17
60650444033083	1
60650444033086	2
60650444033094	9
60650444033098	5
60650444033099	12
60650444033102	7
60650444033104	5
60650444033105	2
60650444033109	2
60650444033110	1
60650444033113	3
60650444033114	4
60650444033116	7
60650444033120	3
60650444033121	4
60650444033130	11
60650444033132	8
60650444033135	3
60650444033137	3
60650444033143	3
60650444033146	1
60650444033157	2
60650444033162	9
60650444033168	3
60650444033183	4
60650444033215	5
60650444033218	2
60650444033220	10
60650444033221	2
60650444033225	2
60650444033227	2
60650444033232	9
60650444033233	2
60650444033234	4
60650444033235	3
60650444033238	4
60650444033239	36
60650444033240	2
60650444033241	13
60650444033253	3
60650444033254	8
60650444033279	7

60650444033281	4
60650444033282	3
60650444033283	2
60650444033284	2
60650451241080	5
60650451241096	10
60650451241098	20
60650451241105	11
60650451241107	5
60650451241111	2

### **6.9 Description of Major Infrastructure to be Deployed**

1. 15 Miles of aerial Middle Mile Fiber optic cabling on existing AEC and Southern California Edison utility poles.
2. One additional server room for a remote terminal inside an existing AEC building.
3. Additional equipment and use in the existing AEC network core, including additional edge routing.
4. Use of AEC owned dark fiber in existing AEC fiber infrastructure.
5. No IRU to be used by AEC, as there are insufficient fiber resources in the proposed areas.

### **6.10**

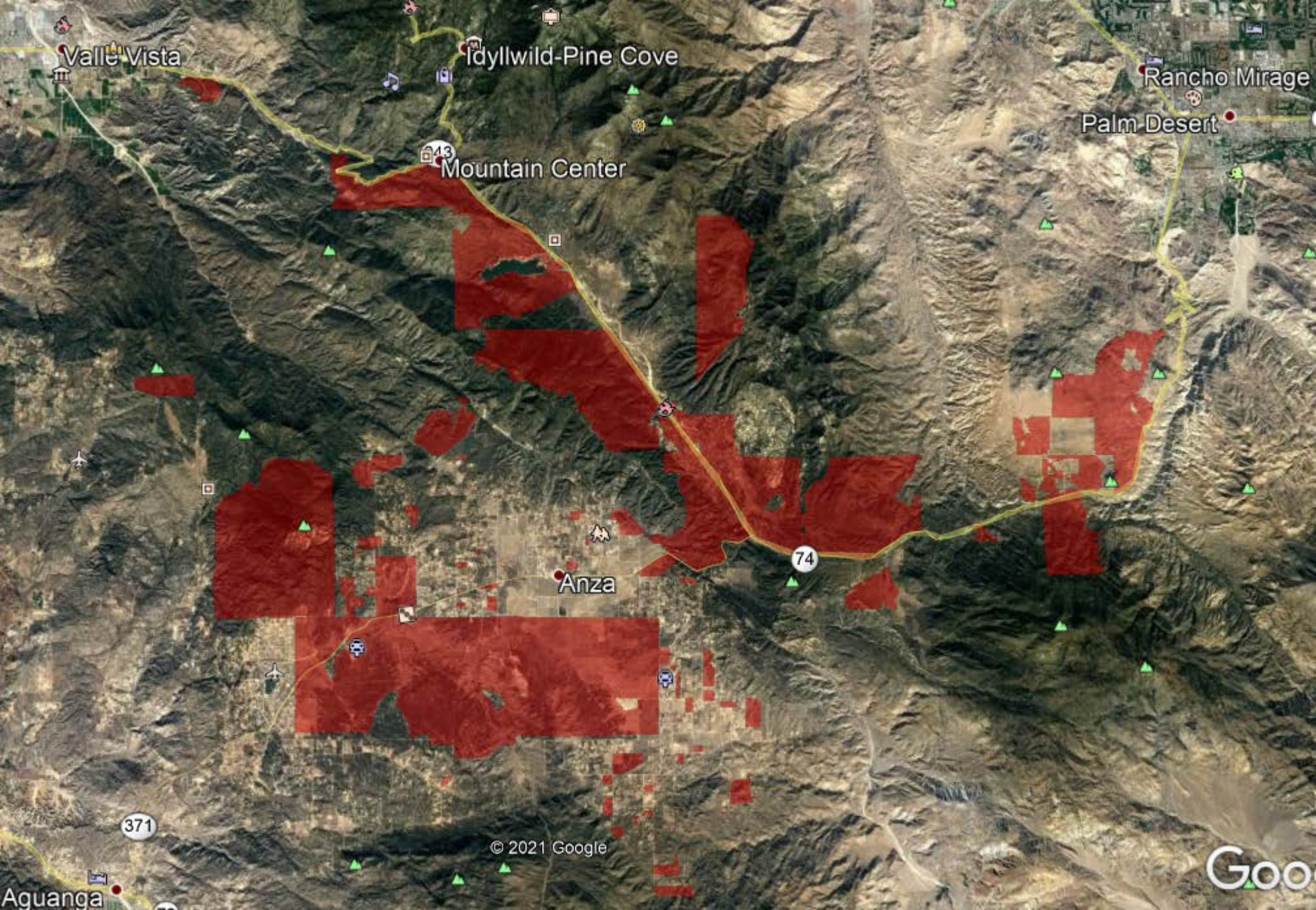
All fiber construction will be 100% aerial

### **6.11 Description of Infrastructure Being Deployed**

Anza Electric Cooperative Inc. will be deploying aerial fiber optic infrastructure throughout RDOF won areas, including 15 miles of new backbone fiber, the utilization of existing AEC fiber, and one new Central Office utilizing an existing AEC building. The project



will be 100% aerial and on existing utility poles, including poles owned by AEC and leased space on Southern California Edison poles. The project is an expansion of our existing GPON FTTH infrastructure and will be built on 100% AEC deployed Fiber with no IRU paths used, as there are insufficient existing fiber facilities in the proposed areas.



Valle Vista

Idyllwild-Pine Cove

Rancho Mirage

Palm Desert

Mountain Center

Anza

Aguanga

© 2021 Google

Goo