

## CASF Application – Anderson Bluff

### Project Summary

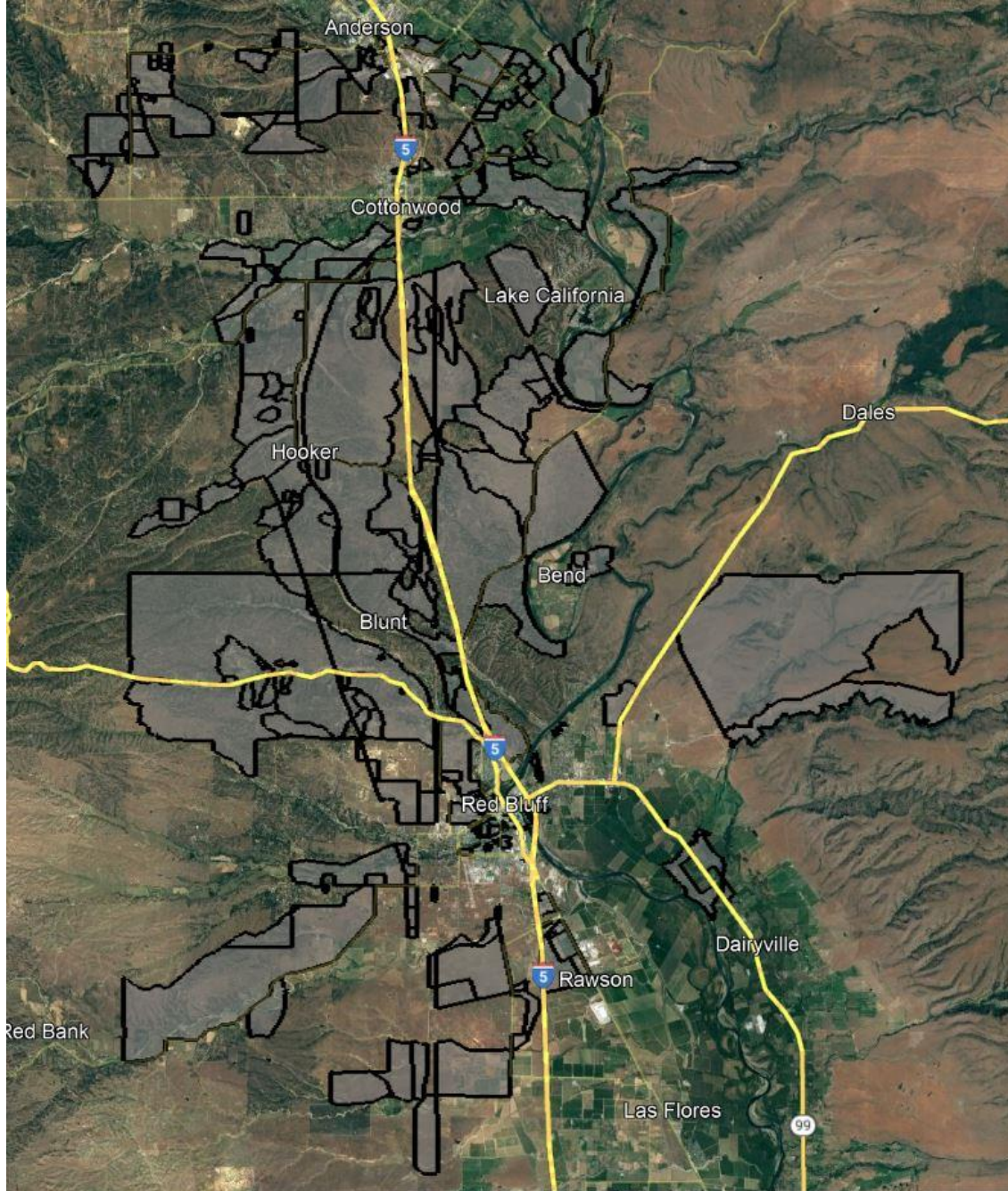
---

<b>Applicant:</b>	Digital Path, Inc. d/b/a DigitalPath, Inc. #1151
<b>Contact:</b>	Andrew Cardin Senior Vice President of Operations <a href="mailto:acardin@digitalpath.com">acardin@digitalpath.com</a>
<b>Project Title:</b>	Anderson Bluff
<b>Location:</b>	Anderson, Cottonwood – Shasta County Lake California, Hooker, Blunt, Red Bluff, Bend, Rawson – Tehama County
<b>Type:</b>	hybrid last-mile/middle mile
<b>Grant Funds Requested:</b>	<b>\$2,301,679</b>

**Project Area Map**



California Interactive Broadband Map – Anderson Bluff in Shasta & Tehama Counties



Census Block Boundaries

The Anderson Bluff CASF Project will provide service to 822 Priority Eligible locations and 817 Eligible locations. 1,639 total locations.

**Census Blocks:**

---

60890120004011	60890126034061	60890123032012	61030001003003
61030004003036	61030004002008	61030004003022	60890122003014
60890123031015	61030002023012	61030004003017	60890123032009
61030002022005	61030004002030	60890123024038	60890123021010
60890122001037	61030004003003	61030004003012	61030003001163
61030006002023	60890123032016	61030001001086	61030003001113
61030002011033	60890123032011	61030004001026	61030004003004
61030007013001	61030004003037	61030006001038	61030005004005
61030004003039	60890122002020	61030002023017	61030005004038
61030006002005	61030004002004	61030004002035	61030004001018
61030006002016	61030002022008	61030004003035	60890123031021
61030006002011	61030002012019	61030004003010	61030004003001
61030004002002	61030004003051	60890122001058	61030003001122
60890122002003	60890126034036	61030002011034	61030005001035
61030006002012	61030004003005	61030001003008	61030005005010
61030007021002	60890123032014	61030004001007	61030005003024
61030006002014	61030002022013	61030007021020	60890122004027
61030002011031	61030005001007	61030002023018	61030004003020
61030004003046	61030004003041	61030004001011	61030002011017
61030004002006	60890123021016	61030002023019	61030004002005
61030006002007	60890123031019	61030001004017	61030004002013
60890123032015	61030004002010	61030005005027	61030002023013
61030004002003	61030002022018	61030004003008	61030002023008
61030006002003	60890122002013	61030003001137	61030005001020
61030006002021	61030006001019	61030002022021	61030001004005
61030002022007	60890123024040	61030004002014	61030006002048
61030006002015	61030008001035	61030002011024	61030005004021
61030006001020	61030002021000	61030007012006	61030005004051
61030007013004	60890122003024	61030003001142	61030004003052
61030004002001	60890121022027	61030005004030	60890122001017
60890122001070	61030007011000	61030002012030	61030002012013
61030008001030	61030002023021	60890120004035	61030002011032
60890122003017	60890121022026	61030005003012	61030004002042
60890123032017	61030004003025	61030002012031	61030001001335
61030004002007	61030002022015	61030002022006	61030008001026
61030005001006	60890122001025	61030004003023	61030005001001
60890122001029	61030004003000	61030002023003	60890122004032
61030002023014	61030007012017	61030003001109	61030005004016
61030003001119	61030002023006	60890123024043	61030005003029

61030005005005	61030006001047	60890123032023	61030002011015
61030004002000	61030005003039	60890122001014	61030001001321
61030007012013	61030006001045	61030004003015	60890122002029
60890120003016	61030005003049	61030003001123	60890122001036
61030004003006	61030002022019	60890123032010	60890122002025
61030003001177	60890122001023	60890123032024	61030002011014
60890122004035	60890123021012	61030001003002	60890122001050
60890122004008	61030007012015	61030006002035	61030001003015
61030003001149	61030005005015	61030003001135	60890122001057
60890122002002	61030004003013	61030004003029	61030002011021
61030005003082	60890123031002	61030004002039	61030004003032
61030005003083	61030008001039	60890123032019	60890123031024
61030005004032	61030005004015	61030001003013	60890122001041
61030002023001	60890123024041	61030004003007	60890122001068
61030003001165	61030002023000	61030002012012	60890122001053
61030003001153	60890123031025	61030004002049	61030003001111
60890122002038	61030003001147	61030002012023	61030003001124
60890126034037	60890123032022	60890122001045	60890122001024
61030005003046	61030002023011	60890122002028	61030003001130
61030004002009	61030004001027	60890122002016	61030004002043
61030004002052	61030003001145	61030002012011	60890122001035
61030004003031	60890123032000	60890123031018	60890122002023
60890120003001	61030002023022	61030002011019	61030004003024
60890120004021	60890122002019	61030002021004	61030003001148
60890122002032	60890122002024	60890122002039	61030004003011
61030002023004	61030008001028	61030001001093	60890123024046
61030004002031	60890123024042	61030006002018	60890123032006
61030004003014	61030002021001	61030002011025	61030004002034
61030004003030	61030004001002	60890123024049	60890123032050
60890122003016	60890122001039	61030008001052	61030001001092
61030003001150	60890122001043	60890122002010	61030003001146
61030008001050	60890122001071	60890122002015	60890122001038

**Zip Codes:**

---

96007, 96021, 96022, 96075, 96080

According to the data available through the California Interactive Broadband Map:

602 locations have access equal to or less than 10 Mbps Down / 1 Mbps Up and 1,037 locations have access at less than 25 Mbps Down / 3 Mbps Up. This project will make speeds available of 100 Mbps downstream and 20 Mbps upstream.

The median household income of the project area is \$69,464.

There are 35 Community Anchor Institutions identified within the project area. None of these locations are listed as eligible or priority eligible.

There is no major infrastructure proposed in this Project.

The major equipment associated with this project is:

- High-capacity access points, generators, licensed microwave links.

Construction will take less than 18 months to complete.

The Anderson Bluff Project is a hybrid last-mile/middle mile fixed wireless deployment utilizing 6 existing towers to deliver service to the households covered by this project.

Once completed, locations covered in this Project will have access to download speeds of 100 Mbps and upload speeds of 20 Mbps. Additional service tiers will be available.

Digital Path, Inc. believes this project to be categorically exempt from CEQA requirements based on the use of existing facilities and local building requirements.

Digital Path, Inc. is not disputing the California Interactive Broadband Map depiction of served status for the locations in this application.

Digital Path, Inc. is not seeking Ministerial Review.

The Middle-Mile component of this project will use licensed microwave links to interconnect the tower sites with an existing fiber connection. The Middle-Mile licensed microwave links are an indispensable part of the project due to the remoteness of the area and lack of available middle-mile connections. DigitalPath, Inc. accepts the open access requirements associated with the middle-mile component of this Project. Once the statewide open-access middle mile network becomes available, it will be connected to.