

## CASF Application – American Valley

### Project Summary

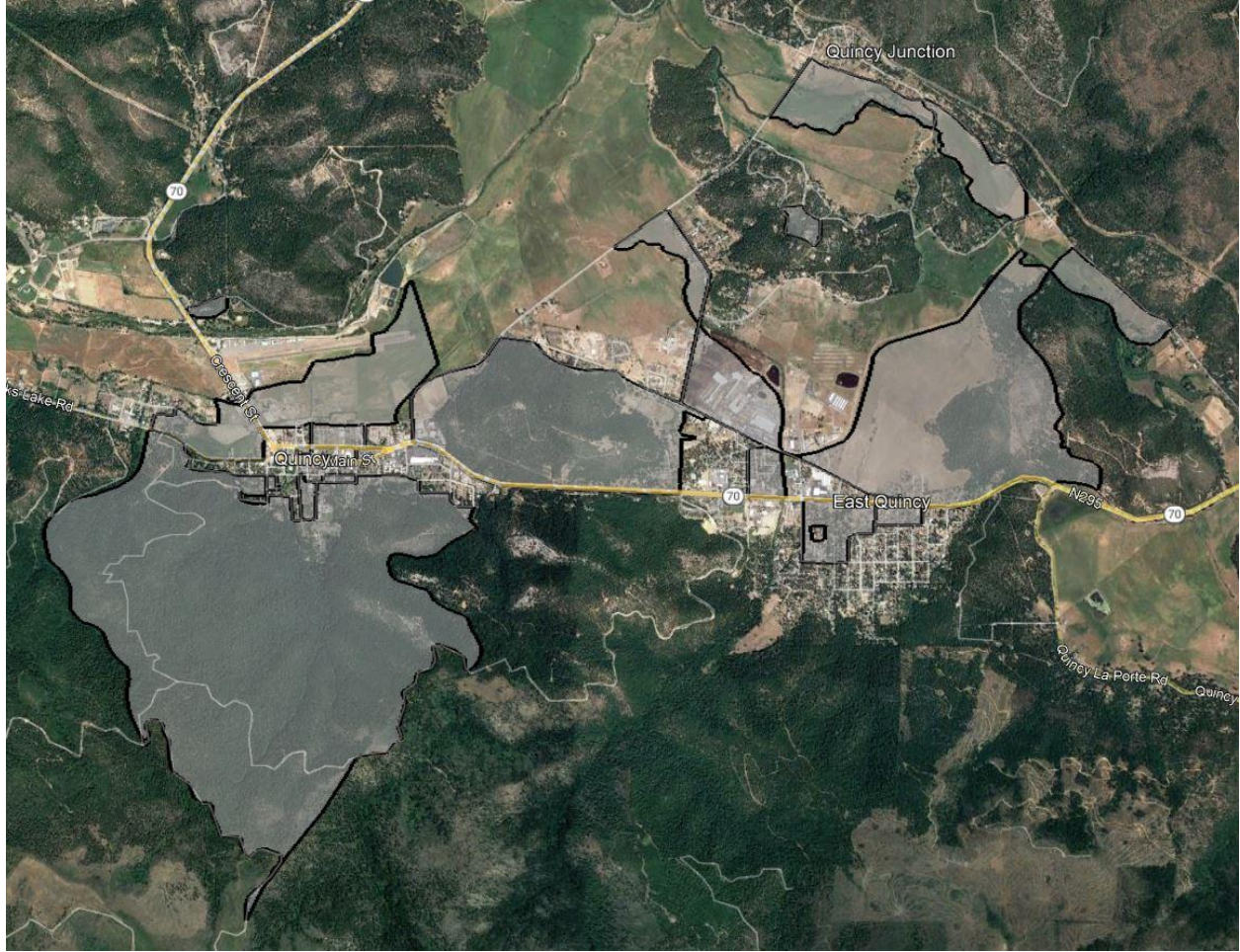
---

<b>Applicant:</b>	Digital Path, Inc. d/b/a DigitalPath, Inc. #1151
<b>Contact:</b>	Andrew Cardin Senior Vice President of Operations <a href="mailto:acardin@digitalpath.com">acardin@digitalpath.com</a>
<b>Project Title:</b>	American Valley
<b>Location:</b>	Quincy – Plumas County
<b>Type:</b>	Last-Mile
<b>Grant Funds Requested:</b>	<b>\$149,776</b>

**Project Area Map**



**California Interactive Broadband Map – American Valley, Plumas County**



Census Block Boundaries

The American Valley CASF Project will provide service to 53 Priority Eligible locations and 8 Eligible locations. 61 total locations.

**Census Blocks:**

---

060630001005010	060630001005005	060630001001001
060630001001007	060630001005000	060630001001003
060630001002001	060630001003000	060630001005021
060630001001025	060630001004018	060630001005001
060630001003005	060630001002006	060630001001010
060630001002008	060630001001022	060630001006014
060630001005017	060630001004006	060630001002013
060630001005013	060630001002010	

**Zip Codes:**

---

95971

According to the data available through the California Interactive Broadband Map:

2 locations have no broadband, 7 locations have access equal to or less than 10 Mbps Down / 1 Mbps Up and 52 locations have access at less than 25 Mbps Down / 3 Mbps Up. This project will make speeds available of 100 Mbps downstream and 20 Mbps upstream.

The median household income of the project area is \$72,809.

There are 4 Community Anchor Institutions identified within the project area. None of these locations are listed as eligible or priority eligible.

There is no major infrastructure proposed in this Project.

The major equipment associated with this project is:

- High-capacity access points

Construction will take less than 18 months to complete.

The American Valley Project is a Last-Mile fixed wireless deployment utilizing an existing tower to deliver service to the households covered by this project.

Once completed, locations covered in this Project will have access to download speeds of 100 Mbps and upload speeds of 20 Mbps. Additional service tiers will be available.

Digital Path, Inc. believes this project to be categorically exempt from CEQA requirements based on the use of existing facilities and local building requirements.

Digital Path, Inc. is not disputing the California Interactive Broadband Map depiction of served status for the locations in this application.

Digital Path, Inc. is not seeking Ministerial Review.

The Middle-Mile component of this project will use existing fiber at the tower location.